

# The **Gold Rose**

**2019 Edition**



**Chapter Reports**  
**2019 NEF Donors**  
**National Officer Reports**  
**2020 MEF Preview**  
**National Fraternity Updates**  
**2019 MEF Summary**

**Past President Larry  
Edwards Retires  
After 65 Years As A Lifelong  
Beta Sig**

**Beta Sigma Psi National Fraternity**

**A National Fraternity For Lutheran Men**



The **Gold Rose**  
2019 EDITION

# National Board of Directors

## Contact Information

### National President:

**Rudy Ristich**  
1140 Dorset Drive  
Wheaton, IL 60189  
Phone: 630.220.0837  
Email: rudy.ristich@betasigmapi.org

### Past President:

**Larry Edwards**  
7092 S. Owens Way  
Littleton, CO 80127  
Phone: 303.810.9293  
Email: larryedwards12@gmail.com

### Vice President:

**Jay Holle**  
16825 W 162nd Street  
Olathe, KS 66062  
Phone: 816-997-5358  
Email: jayred1@aol.com

### Treasurer:

**Chris Ristich**  
PO Box 88238  
Carol Stream, IL 60188  
Phone 630-776-7350  
Email: treasurer@betasigmapi.org

### Pastoral Advisor:

**Robert Smith**  
6600 N Clinton Street  
Ft Wayne, IN 46825  
Phone: 260.452.3149  
Email: robert.smith@ctsfw.edu

### Pastoral Advisor:

**Pastor Mike Vinson**  
330 W Fowler Avenue  
W Lafayette, IN 47906  
765-743-2398  
Email: vinson6@purdue.edu

### Website / Marketing:

**Jake Vanderslice**  
1201 Office Park Road, Apt. 808  
West Des Moines, IA 50265  
Phone: (913) 522-3527  
Email: jvslice11@gmail.com

### Director of Publications:

**Gary Raffety**  
9228 W. 73rd  
Merriam, KS 66204  
Phone: 913.831.3842  
Email: theraffis@kc.rr.com

### Director of Recruitment:

**Alex Trimpe**  
631 Orleans St. Apt. 71  
Detroit, MI 48207  
Phone: 812.390.0942  
Email: alexwtrimpe@gmail.com

### Director of Scholarship:

**Steven Hick**  
3685 E. Wesley  
Denver, CO 80210  
Phone: 303-548-9527  
Email: steven.hick@du.edu

### Leadership Consultant:

**John Hatfield**  
1200 Centennial Drive  
Manhattan, KS 66502  
Phone: 719.233.1668  
Email: jrhatfield@gmail.com

### Alumni Relations:

**Dan Jacobi**  
7423 Cody Drive  
West Des Moines, IA 50266  
Phone: (515)-419-5532  
Email: Dan.J.Jacobi@gmail.com

## Fraternal Foundations

### National Educational Foundation:

**Adam Rusch, Chairman**  
212 W. California Avenue  
Urbana, IL 61801  
765.714-4203  
Email: arusch2@illinois.edu

### Beta Sigma Psi Housing Foundation:

**Andy Orstadt, Chairman**  
639 Bonita Avenue  
St Louis, MO 63119  
Phone: 314.962.0582  
Email: aortstadt@sbcglobal.net



Editor: Gary D. Raffety '62

### Annual Chapter Dues:

Annual dues payments help to pay for alumni chapter expenses and also help the alumni with their responsibility to help the active chapters with house maintenance improvements.

Please pay your dues annually!

# President's Report

By: Rudy Ristich, National President

At Beta Sigma Psi we believe in facilitating the ideal environment for the college man of faith in Christ where he can grow spiritually, scholastically and socially. We do that by developing environments that are focused on individual and collective growth through service to church, campus and community.



Without conscious effort, entropy inevitably takes hold and dissipates the concentration of resources that facilitated success.

Professionals who work with corporate and family entities on the planning and governance necessary to sustain success will always begin with ensuring purpose and values are clearly communicated. In our Fraternity, we communicate our core values through Ritual and we've spent a great deal of time this semester preparing our chapters to

correctly and frequently communicate values through our Rituals.

These same professionals will also frame the plan in terms of financial, human and intellectual capital. In this issue you'll read about the different ways we are deploying our funding, volunteers and ideas to further the Brotherhood.

Per aspera ad astra

We are now a full year in to a four-year target effort to improve the Beta Sig experience through three objectives: **Encouraging alternative traditions in chapters to eradicate hazing, extending leadership programming to our alumni to increase their involvement and to create high quality living spaces for active to ensure strong recruitment.**

Many of us are likely familiar with a particularly succinct proverb on success: from clogs to clogs in three generations. Variations on this theme are found across the world and they each speak to the fleeting nature of sustained success.



2020 MEF will be in Des Moines

## MEF February 14-16, 2020

### Please Note:

MEF will start on President's Day weekend this year and run from February 14 through 16, 2020. The banquet will remain on Saturday night. The Annual Awards Ceremony will follow immediately after the dinner.

### The MEF serves 3 important purposes:

1. Educating Associates, Actives & Alumni volunteers in key areas of Fraternity life.
2. The Annual Meeting of the National Council
3. Celebrating the success of our Active Chapters and Distinguished Alumni at the Annual Awards Banquet.

This is your opportunity to meet fellow Beta Sigs from other chapters, to attend work sessions that will help you become a stronger, better informed leader, plus gain a lot of self-confidence in yourself. You cannot afford to miss this event.

### Location for this year's MEF:

**West Des Moines Marriott**  
1250 Jordan Creek Pkwy West  
Des Moines, IA 50266

### Registrations Close

on Feb. 1, 2020, so go to

**mef.betasigmapi.org**  
and register now.



## This is a Mandatory National Event, For All Incoming and Outgoing Presidents

### Only presidents can attend!

You are only responsible for your transportation; all other costs are covered by National. The Recruitment Readiness Retreat will begin on Sunday the 19th and it is expected that you will attend. Register with the National Office by December 15th at: [office@betasigmapi.org](mailto:office@betasigmapi.org)

## Aloft Hotel

9700 Balmoral Ave., Rosemount, IL 60018  
(By O'Hare- there is a free airport shuttle)

Questions-jrhatfield@gmail.com-719-233-1668

### Contributors:

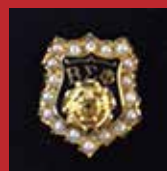
Larry Edwards, Steven Hick, Ken Meyer, Gary Raffety, Chris Ristich, Rudy Ristich, Rod Thompson, and the Chapter Presidents.

Beta Sigma Psi Headquarters;  
2408 Lebanon Avenue  
Belleville, IL 62221  
Phone: (618) 235-0014  
Fax: (618) 235-0014  
Email: [office@betasigmapi.org](mailto:office@betasigmapi.org)  
Online: <http://betasigmapi.org>

Editor: Gary Raffety  
Cover Design: Gary Raffety

### In This Issue

President's Message	3
Treasurer's Report	4
Scholarship	5
Past President's Report	6
Alumni Data Base	7
Ken Meyer on Organization	8 - 9
Chapter Reports	10 - 19
National Fraternity Archives	20
MEF Awards Dinner	21
Manfred Philipp Bio	22
2018 MEF Awards	23
NEF Donations	24 - 25
Questions on NEF	26 - 27
What does the Bible Say?	28
Chapter Eternal	29
Col. Karl Karst Memorial	30
Erickson Chemical Engr. Fund	32
MEF Photos from Louisville	35





# 2019 Treasurer's Report

By: Chris Ristich, Treasurer

**In the** 2018 fiscal year (ending June 2019), the National Fraternity invoiced \$297,404 in revenue, which includes dues and fees from the active chapters as well as reimbursements from the Education Foundation and Alumni chapters. This represented a 15% increase over the prior year. However due to financial challenges at three of our chapters, the actual revenue collected was only \$242,799, with \$54,605 still outstanding as accounts receivable for the year. As a result, collected revenue is roughly flat versus the prior year.

Expenses increased \$33,744 versus the prior year, a 15% increase. The largest expense increase was for our National Office where costs were \$27,349 higher than the prior year. The National Office category includes costs related to staffing and maintaining our National Office as well as funding the salary, travel, and related expenses for Leadership Development. The main drivers of the increase



Chris Ristich - National Treasurer

are an increase in insurance costs and administrative cost. The insurance cost increase is a true increase we expect to continue forward. The administrative cost increase is not a true year-over-year increase, rather is due to delayed reporting of administrative work from the prior year.

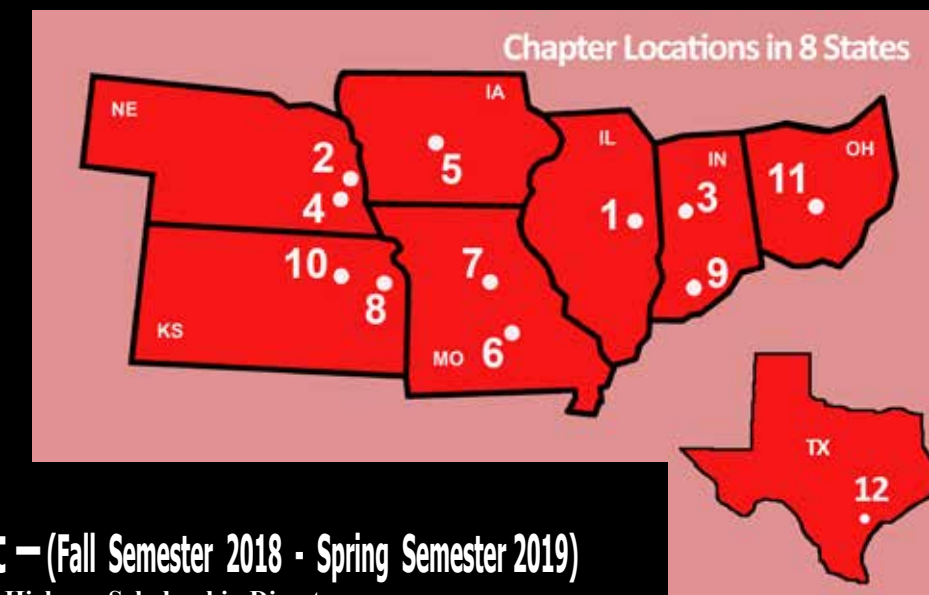
The second largest expense variance versus prior year was an increase of \$11,301 for the Membership Education Forum. This does not represent an increase in the actual cost of operating the event, but is due to repayment of \$10,759 towards \$30,605 in accounts payable for previous year MEF costs. We plan to pay the remainder of that balance this year once our accounts receivable is shored up.

The National Fraternity began the year with a cash balance of \$37,084 and ended with \$6,430, a loss of \$30,654. Collecting all dues owed in the year would have resulted in a gain of \$24,068 and a more comfortable cash balance of \$30,498.

This indicates the main issue is collections, rather than costs outpacing revenue. Payment plans are in process for chapters contributing to the large accounts receivable balance to address this in the current fiscal year and restore our healthy reserves.

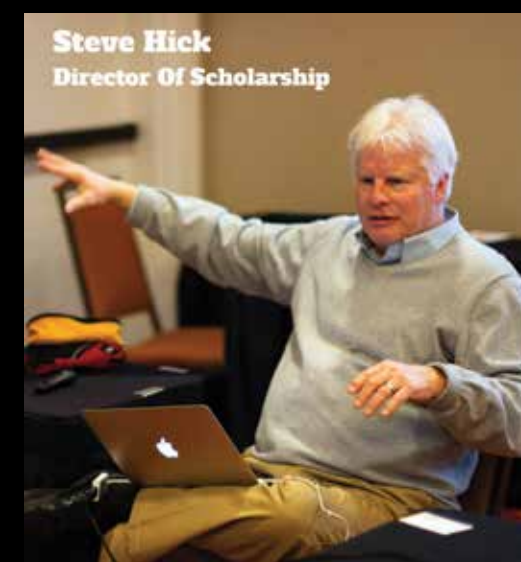
## List of Chapters and Map Key

1. Alpha - Univ. Illinois
2. Alpha-Alpha - Midland Univ.
3. Beta - Purdue Univ.
4. Delta - Nebraska Univ..
5. Epsilon - Iowa State Univ.
6. Eta - Missouri S. & T.
7. Iota - U. Missouri
8. Nu - Univ. Kansas
9. Omega - Indiana Univ.
10. Zeta - Kansas State Univ.
11. Chi Colony - Ohio State Univ.
12. Phi Colony - Texas A&M Univ.



## Scholarship Report – (Fall Semester 2018 - Spring Semester 2019)

By: Steve Hick - Scholarship Director



Steve Hick  
Director Of Scholarship

Academic year 2018-2019 was a repeat of the year before with Omega Chapter at the University of Indiana and Nu Chapter at the University of Kansas repeating as the number one fraternity on their campus with respect to grade point average. Epsilon Chapter at Iowa State University maintains a position near the top coming in at number three and Alpha Chapter at the University of Illinois is working its way up on campus landing at number four last spring.

The table below illustrates the chapter GPAs for last school year. Of course, our goal is to keep our chapters at or near the top of all fraternities on our respective campuses. Beta Sigma Psi chapters should always place above the all-male grade point average as well as the all-fraternity grade point average on campus. The universities we call home have Greek communities and student populations of varying sizes making apples-to-apples comparisons statistically tricky.

Active members reading this; what are you doing to improve your study habits? Are you taking advantage of the many resources on campus to help you achieve your greatest academic performance? When was the last time you consulted with the academic success center on your campus? Alumni reading this; what are you doing to mentor and help your chapter succeed academically? Can you make time to visit our men, coach them, and share how your academic success has paid itself forward throughout your career?

Beta Sigma Psi Scholarship Report for 2018-2019						
Chapter	University	Fall 2018 GPA	Spring 2019 GPA	Spring AMA*	Difference	Accolades
Alpha	Illinois	3.111	3.464	3.11	0.354	#4 on campus
Beta	Purdue	3.18	3.18	2.97	0.21	
Delta	Nebraska	3.327	3.291	3.012	0.279	
Epsilon	Iowa State	3.25	3.31	3.02	0.29	#3 on campus
Zeta	Kansas State	3.326	3.175	3.044	0.131	
Eta	Missouri S&T	3.286	3.122	3.034	0.088	
Iota	Missouri-Columbia	2.792	2.99	3.05	-0.06	
Nu	Kansas	3.53	3.51	3.09	0.42	#1 on campus
Omega	Indiana	3.535	3.517	3.18	0.337	#1 on campus
Alpha-Alpha	Midland	Not reported	Not reported	Not reported		
Chi Colony	The Ohio State	3.38	3.17	3.17	0	
Phi Colony	Texas A&M	3.47	3.53	3.06	0.47	

\*AMA = All Male Average

### Beta Sigma Psi National Lutheran Fraternity

#### Profit and Loss

July 2018 - June 2019

	(FYE June 31)		
	This Year	Last Year	Change
<b>Income</b>			
400. Foundation Reimbursements	72,471	78,725	(6,254)
412 Interst Income	4	3	1
425 Membership Dues	136,333	130,770	5,563
455 Merchandise Sales	950		950
470 National Convention Meeting	32,815	32,455	360
Unapplied Cash Payment Income	230	(150)	380
<b>Total Income</b>	<b>\$ 242,803</b>	<b>\$ 241,802</b>	<b>\$ 1,000</b>
<b>Cost of Goods Sold</b>			
500 Cost of Goods Sold	7,564	4,838	2,726
<b>Total Cost of Goods Sold</b>	<b>\$ 7,564</b>	<b>\$ 4,838</b>	<b>\$ 2,726</b>
<b>Gross Profit</b>	<b>\$ 235,239</b>	<b>\$ 236,964</b>	<b>\$ (1,725)</b>
<b>Expenses</b>			
600 Insurance	54,726	55,244	(518)
620 Membership in Hsg Foundation		1,940	(1,940)
625 Ntl BOD	15,567	17,987	(2,420)
629.5 scholarship		2,000	(2000)
650 National Convention	12,860	1,559	11,301
660 National Office	139,550	112,201	27,349
720 Office Expenses	429	26	403
750 Publications	34,904	30,779	4,125
760 Leadership Conference	5,663	4,581	1,081
770 Inner Ring Conference	1,496	5,455	(3,960)
8500 Misc expenses	699	375	324
<b>Total Expenses</b>	<b>\$ 265,893</b>	<b>\$ 232,148</b>	<b>\$ 33,744</b>
<b>Net Operating Income</b>	<b>\$ (30,654)</b>	<b>\$ 4,815</b>	<b>\$ (35,470)</b>
<b>Net Income</b>	<b>\$ (30,654)</b>	<b>\$ 4,815</b>	<b>\$ (35,470)</b>

Tuesday, Nov. 26, 2019 6:54:57 GMT-8 - Cash Basis



# 65 Years As A Beta Sig

By: Larry Edwards '55

## Pledgeship & Activation

You must realize that in 65 years a lot has changed, both to the Fraternity as well as the college experience. There is an old Chinese Proverb, that says, Change is inevitable, except from a vending machine! That was certainly the case when I entered Kansas State College of Agriculture and Applied Sciences, as it was known in 1954. My mother wanted me to register and go to the University of Kansas – 30 miles away, but I thought that was too close to home so I chose K-State.

At that time, girls had to live in the Dorms the first year, and all students, men and women, had to live in college approved housing. For men this meant living in West Stadium (Animal House) which had room for about 100, or in a roach infested basement of a rooming house, or in a Fraternity. There was no place on campus for men to eat, so you went to Aggieville and stood in line for a seat at the counter of a local diner. Since I knew nothing about fraternities, I chose the life of an independent. My roommate was in Scouts with me, but he had turned into a student nerd. Every place in Manhattan closed down on Sunday night, but there was one hope – Gamma Delta was one of the Lutheran Student organizations that offered a meal on Sunday night, and a chance to talk to other students – men and women.

It was obvious that I was homesick and was reconsidering my choice of K- State over KU. We always had about 30-35 people in attendance including some very nice girls. I was also introduced to 10-15 young men from the Lutheran Fraternity about a block away from St. Luke's Lutheran Church. I had never heard of a Lutheran Fraternity before. Remember also that K-State was quite small at that time, about 5,000 students, of which girls only represented about 25%.

Then began a series of invited dinners at the Beta Sig house, who had the best Housemother I had every met – Elizabeth Seaton. I also received invitations to the Sigma Chi, Lambda Chi, and Theta Xi fraternities for dinner. But by far the most impressive experience was meeting the men of Beta Sig. I grew up in Kansas City, and there were two men in the house of about 45 from Topeka, and two brothers from Newton – Bob and Jim Raffety. The rest of the members were farm kids from rural Kansas. What a change from then to now There are very few family farms left in the State.

I also learned that Beta Sigma Psi, as a National Fraternity, was very small, with only 5 chapters – Beta, Epsilon, Delta, Eta, and Zeta. Total undergraduate membership was also low – about 150 members in all five chapters. **But you pledge a chapter, not a National Organization, because they will become your future brothers.** That is a secret that must be shared with every potential associate member today and in the future.

The men of Beta Sig offered me an opportunity to pledge and invited me to their social events. Since I was living in a rooming house with one phone for all of us, they would call me about 10:00 PM to chat. My landlady did not approve and invited me to leave! But, as it turned out, she did me a big favor. So, just before Thanksgiving, I moved into the house and shared a room with two others – One pledge and active Del Bokelman – a vet student who retired a few years ago as Vice President of Research for a small pharmaceutical company by the name of Pfizer.

This was the first year that Zeta Chapter had lived in a house owned by the Alumni Association at 221 N. Delaware. The house had previously been owned by Sigma Phi Epsilon, and they had completed a new house closer to the campus. We had a beautiful view of downtown Manhattan, with about 5 terraces down to the sidewalk in the front. Big parking lot, and Mother Seaton had the only garage in the front of the property.



In March of 1955 they held activation for our pledge class. It was on a Sunday Morning and afterwards we were taken to the Wareham Hotel for breakfast. Quite an experience. The initiation ceremony is simple and beautiful. That spring I received my first award from the Fraternity - Outstanding Pledge. The Parents club had a banquet at one of the Lutheran Churches where the announcement was made. In the Spring Elections of 55, I was voted in as Song Chairman ... the journey began. One thing about pledge-ship and my pledge brothers. We became very best friends during our college days and remained so, for the rest of our lives.

Time as a student at Kansas State became more critical. I decided to pursue a dual degree in Civil Engineering and Geology, with the hope of becoming a Geological Engineer after graduation and the service. I went to my first National Fraternity Convention in 1955 at Rolla. Eta Chapter's house was



Larry Edwards - Past National President

an old Confederate Hospital with a cab stand in front just off the Main St. When compared to our house, we lived in a palace.

For the Fall Semester, I was elected to the office of Second Vice President (House Manager). For the Spring and Summer, I was elected to the position of Rush Chairman. Rush had been very unsuccessful the previous Summer and we had an obligation to our Alumni to get some good men into the house for the fall semester of 1956. We pledged 19 which was the best ever at that time.

I also continued to broaden my activities outside the Fraternity. The college was building a new Student Union, replacing an old WW II barracks, which served hotdogs at one end and had two badly used pool tables at the other end. I was elected the first Union Governing Board Chairman. I also was elected to the Student Tribunal and served as the Chairman as well. For the Spring Semester in 1957, I was elected Chapter President.

## Meeting John Hingst

I first met John Hingst (Beta) at the Rolla National Convention. (see photo at right). He was elected National President in 1952 to replace his predecessor, who never called or went to a meeting. John was in his late twenties and had graduated first in his class of Chemical Engineering at Purdue. Although he was thinking about going back to Texas, he married the only daughter of the largest beer distributor in Norther Indiana – Kokomo, and the rest is history for that town.



I had previously mentioned that the Fraternity was very small at the time I joined. John had learned of a Lutheran Rooming House at the U. of Illinois aptly named "Come on to My House" from the popular song at the time. John drove to Illinois, knocked on the door, and in a series of meetings, convinced that group to come back to the Fraternity as Alpha Chapter. I have never met a group with more really smart members under one roof, than the men of Alpha Chapter at the time of initiation.

## The Road to National Leadership

My next encounter as an undergraduate, was at the 1957 National Convention in Ames, Iowa. Delta and Zeta Chapters were the largest chapters by far at that time and most of their members were from the farm.

John proposed at the National Council Meeting that we change convention times from around the Founding date in April to the middle of the summer. The President of Delta and myself strongly protested and said that our delegation would be cut in half because most of our members had to

Continued Top Nex Page

Continued from previous page

work on their farms. The motion passed by a small margin, but later John indicated that he had won the battle and lost the war and asked for the convention to continue at the same time in April. That raised my admiration for John Hingst a lot!

In the Spring of 1957, I was asked to take over the position of National Scholarship Officer from Oscar Albrecht, a Zeta Chapter Member. Later that summer, after being asked by John Hingst, I decided to transfer to Kansas University in Lawrence to become the first full time colonizer. In the Spring of 1957, we had planted the seed with Pastor Britton, and he had taken it upon himself to rent a house at 1218 Mississippi St, across from the football stadium, and a block north of the Student Union.

We started that fall with 12 men in the house and expanded that number to 16 when I returned in the Spring semester of 1958 to K-State to complete my studies. I was elected Zeta Chapter President for that semester, becoming the first member of our chapter to repeat twice as chapter president.

In the spring of 1958, I was elected as Summer Rush Chairman and again we had a successful recruitment class of 21 members. So now Zeta Chapter had a total membership of 76 for a house that had a capacity of 45, which did require some makeshift quarters for the 5 guys, who were forced to live in the basement under the kitchen and four annexes for the rest.

The basement rats had to put up with a lot. They had to go outdoors, climb up a flight of steps, cross an open courtyard, re-enter the house, climb a second flight of steps just to go to the bathroom. They had to repeat the process at the end of the day to reach their bunk beds in one of two second floor dorms. Guys were used to roughing it in those days and did not object.



When the President of our Manhattan Alumni Association – Norm Wilms (at left) – asked what are we going to do about our oversized membership, I said build a bigger house. The next year, in 1959, I was elected to the Board of the Manhattan Alumni Association, and served on the building committee for the new house as Board Secretary. That

was the start of a process that would eventually lead us to the construction of Zeta Chapter's new and current home at 1200 Centennial Drive.

At the same time after a semester of Grad School, where I served in Student Governing Board, I was invited to participate in the Military for 3-1/2 years. When that period of my life ended – I became the Executive Vice President of the National Fraternity from 1962 to 1967, and National President from 1967 to 1971, with a stint for one year as Interim National President in 2012-2013.

Continued on page 38

# Alumni Data Base Needs Updating

To all alumni:

We are missing data on many of you. Data was lost and we need to fill in the missing holes. Please go to the website and update your personal profile. **We secure and protect the data and DO NOT SHARE IT WITH ANYONE!** It is easy to do. Get someone to help you if necessary, but please do it. Go to the website link at:

[www.betasigmapsi.org/account](http://www.betasigmapsi.org/account).

## Interesting Facts Extracted from the Beta Sig Data Base

By: Gary Raffety

Living alone with many quiet evenings to fill, I sometimes think of things that I can create to place in the Gold Rose. Something that may be of interest to my fellow brothers. While doing some updates to the data base, I noticed some of the titles that were listed and decided to investigate.

By just looking at the title column, I found that we have had a navy admiral, a couple of army generals, a State Governor, a chief justice of a state supreme court, a state senator and a House Speaker in a state government, several city mayors, a lot of Doctors of Medicine, Veterinary Medicine, Dentistry and a lot of PHD's. We have many alums that have excelled and have reached the pinnacle of their chosen fields. They are college presidents, outstanding researchers and professors that have excelled within their areas of expertise.

What the data base does not indicate however, are the large numbers of our Brothers without titles that have excelled in their professions. Many have become presidents and vice presidents of major corporations. Others were and are presidents of smaller companies, many of which they founded. Many alums are responsible for patents and inventions which changed their professions and the lives of all Americans.

Based on the large numbers of men that I have met and associated with over the years, I believe that I can say with some certainty that the vast majority of our members have chosen Engineering for a career. Many of our engineering grads have excelled and achieved in a big way.

What might surprise many is the number of members that have been and currently are Lutheran Pastors. According to the national data base, there have been 116 members listed that are Lutheran Pastors. Specifically, 85 are activated

members, 33 are honorary members and 3 are friends of the fraternity. One of our members was in fact offered the top job in the synod he was in, but turned it down in favor of retirement.

Sadly, even with our sizeable number of alumni pastors scattered throughout all synods of the Lutheran Church, knowledge of Beta Sigma Psi Fraternity appears to be a well-kept secret among the pastors and members of their congregations. We need to make it a goal to correct this situation.

Some other interesting facts came to light when I reviewed the 8,700 plus list of names. About 1,050 are now deceased, just under 100 members have been deactivated, there are 67 friends of the fraternity and 101 names listed as honorary members. A total of 64 have resigned their membership.

There are quite a few members with the same last names. For example, there are 84 last names of Johnson and 10 individual Johnson's with the same first name. There are 4 Davids, 4 Roberts, 3 Rons, and the rest are pairs. This is common with the other large groups as well, which illustrates the necessity for everyone to give their middle name or initials when updating their profiles.



The other popular last names are Meyer (74), Anderson (52), Smith (47), Miller (44), Schmidt (44), Nelson (39), Peterson (34), Mueller (32), Schroeder (30), Olson (29), Brown (22), Jones (21), and Larson with 21.

There are 24 groups with 15 or more with the same last names, 12 groups with 20 or more, 10 with 30 or more, 6 with 40 or more, 3 with 50 or more, 2 with 60 or more, 2 with 70 or more, and one with 80 or more - (84).

Keeping a data base current is a never ending process and it is hard work when we have to pull the information out of everyone. It is a lot easier when Beta Sigs remember to notify the national office and/or their alumni chapters when they move or changes their contact information. We have set up a profile page on the website that allows you to update your personal information.

Please go to the website ([www.betasigmapsi.org/account](http://www.betasigmapsi.org/account)). We keep this data secure and DO NOT SHARE IT WITH ANYONE ELSE. It only takes a few minutes to do. Please help us get this done!



# Going Beyond Good Intentions

By: Ken Meyer '65 - Beta Chapter

**Two quotes** from the 2018 Gold Rose articles:

1. Brian Clark - Epsilon Alumni Treasurer:

*"Time has proven that one will not thrive without the others. Therefore, it is the task of the National Fraternity and alumni chapters, working in tandem, to create enriching environments, where our collegiate members can flourish from God's teaching."*

2. Rudy Ristich, National President

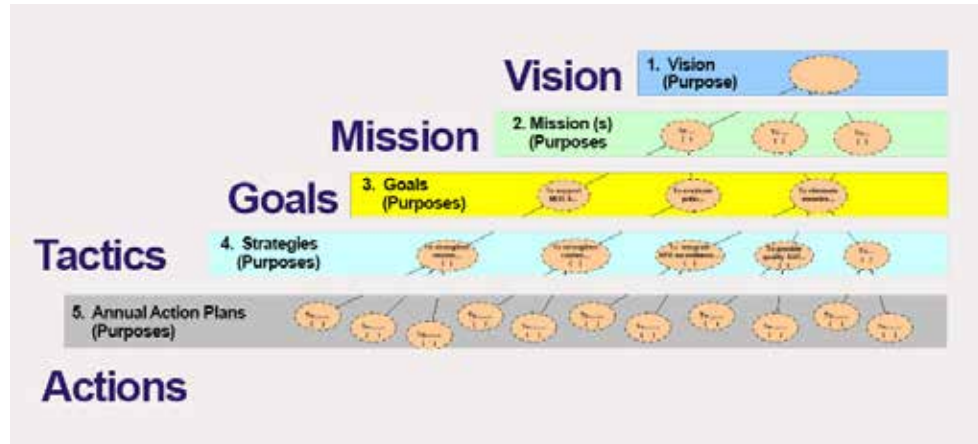
"From our working sessions we collectively decided to **focus the next 4 years on the following three priorities:**

1. Encouraging alternative traditions in chapters to eradicate hazing.
2. Extending leadership programming to our alumni to increase their involvement.
3. Fundraising to create high quality living spaces for actives to ensure strong recruitment.

By now you may get the theme of my message – How do we know? There are many good intentions and many results. But, can you see them? The way to go beyond 'good intention' is by adding clarity to each and making connections among each showing the strategy of support. In other words, show how service flows throughout the organization.



The common denominator for all is SERVICE and seeing the organizations strategy of support enables a transparent process in support of achieving those intentions. I call this a "Service Flow Pull Structure." This is part of a framework for accountability for each action (intention) to improve the results desired. It is all about service and who or what serves whom or what. Each oval is an action or purpose with arrows pointing in the direction of service or the "why" of the purpose:



Your leadership has been at work in 2019 developing the right questions for these intentions. Here is the second part of the framework for accountability for each action purpose (intention) to improve the results:

Customer \_\_\_\_\_ Agreed to by: \_\_\_\_\_ on date: \_\_\_\_\_

Q 1. What is the Purpose? - (To create...To provide.... To ensure...)			
Q2. What are the Measures of Success? (goal, target, etc.)	Q3. What is actually being measured? (valued)	Q4. What is the Frequency of measurement? - How often will this be measured (valued)	Who is Responsible? (accountable)

Pull Question Form \_\_\_\_\_ Supplier/Support \_\_\_\_\_

© 2010 by Alignment at Work LLC ALL RIGHTS RESERVED

Each of these goals will enable a foundation upon which we can ensure the health and safety of the men of faith who share their collegiate experience at Beta Sigma Psi. The young men today are excelling in many areas of importance and are more than worthy of our continued support."

The questions I would like to ask are:

Do you wonder how things are going with these priorities?

What is the framework for achieving them? Do you wonder if we are wandering?

Do you wonder what the future holds for Beta Sigma Psi?

Is Beta Sigma Psi centered on three S's: Spiritual, Scholastic, and Social? How would you know?

Luther's Emblem represents the Lutheran faith and consists of a black cross inside of a red heart inside of a rose. Is Jesus and his teachings our framework? How would you know?



The organization of Beta Sigma Psi has three separate corporations:

- The National Fraternity
- The Education Foundation
- The (Housing) Foundation.

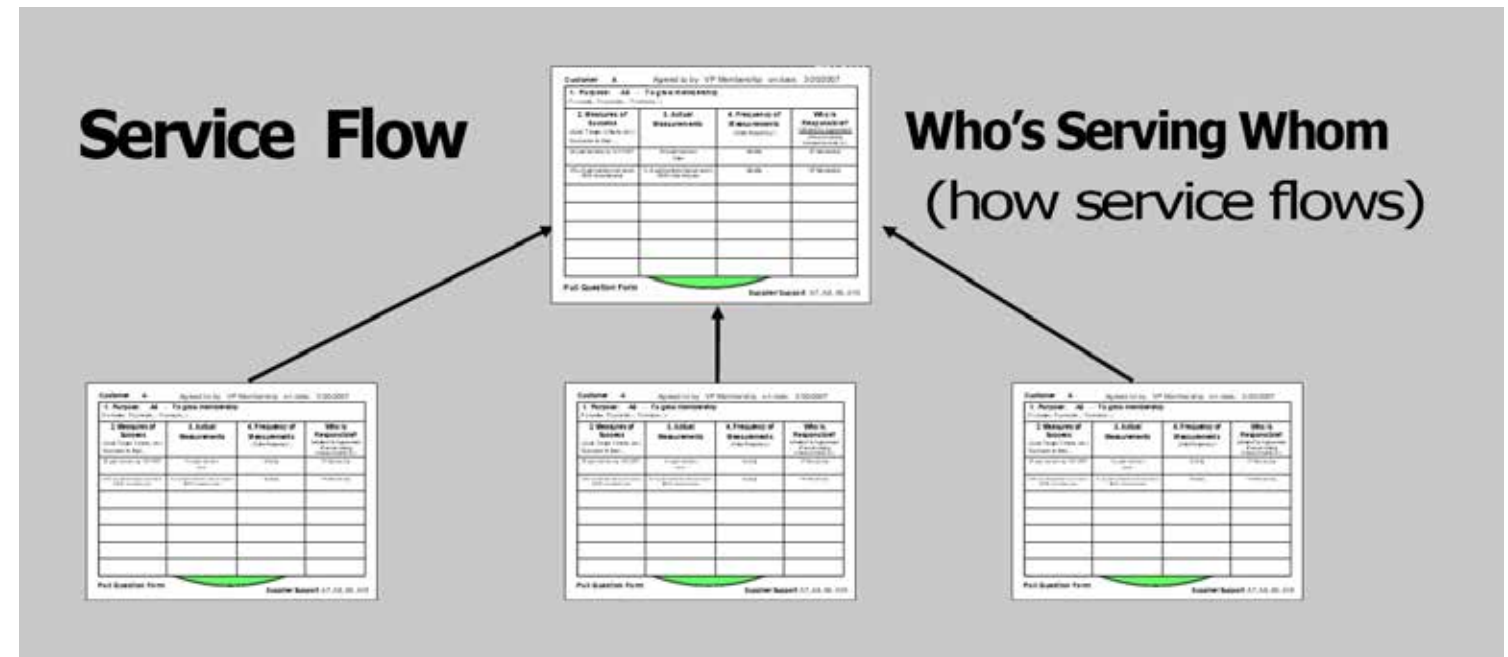
Each has a specific mission, purpose, and Board of Directors. How are each of them doing? How would you know?

Continued top page 9

# Going Beyond Good Intentions

Continued from previous page

Each intention or purpose has a form that provides the communication needed to go beyond the good intentions:



It is inherent in all of us to ask 'Why?' To find purpose. That is pull at work. But what is missing is the clarity and awareness provided by the answers to the other 3 Pull questions. Hence, we are often in a trial and error mode of figuring out the appropriate measures, and the 'How' needed to serve the 'Why.'

With GOD as the ultimate pull, He provides the connections that effect the choices we make as to what to act on. The Service Flow Pull Structure will ensure these connections to the ultimate Pull – GOD. Service with love is the connector.

Everyone is invited to participate. During 2020 and beyond, your leadership will be asking the right questions to all of you to take the pulse of all these intentions. With the help of the internet, it will be a transparent and quick process. The challenge is for each of us to step up and do our part. How? By responding to the questions your leadership will be asking. This will happen through phone calls, surveys and other means. Let's all pull together and "Go Beyond Good Intentions".

## Ken Meyer, a Graduate of Purdue University, is the Founder and CEO of Atlanta-based Alignment at Work, LLC

Ken Invented the Pull Principle® and the Pull Thinking® methodology - the foundation for organizational alignment. And he is the author of the book: *Pull Thinking®: Harness the Power of Pull to Fuel Growth and Ignite Performance by Aligning People, Culture and Purpose*. Available on Amazon.

He has Worked with many organizations such as:

- TRW - Lucas Aerospace
- The Atlanta City Council
- Global Immunization Division and the Leadership Management Institute of the CDC
- The Atlanta Community Food Bank
- The Institute for Nuclear Power Organizations – INPO

He is currently working on his second book entitled: *Beyond Good Intentions: Government, Healthcare and Education—Pull Thinking® Applied*

For questions, comments or just want to talk, feel free to contact Ken at: [Ken@PullThinking.com](mailto:Ken@PullThinking.com) and his website is [www.PullThinking.com](http://www.PullThinking.com).





University Of Illinois, Urbana, IL

**President's Report**

By: Andrew Diefenbacher- President

The fall semester has been going well for Alpha Chapter so far! We were happy to welcome 6 new associate members after a busy rush season. We kicked things off over the summer with a Chicago Cubs baseball game, rafting trip, and hiking trip.

Once we all got back on campus, we had fun with our rush events like sand volleyball, ultimate frisbee, an NFL Opener watch party, barbecue at the house, a poker night, and paintball.

Once the rush season came to an end, we got back into having some of our traditional events like our 4H Spaghetti Dinner, barn dance, and semi-formal. We were also happy to welcome back many alumni Homecoming weekend, and enjoyed our meet and greet, football tailgate, and Homecoming banquet.

We have also given back to the community in a variety of ways, including working on a farm near campus, participating in a Habitat for Humanity build day, and hosting our signature Horseshoes for Habitat philanthropy event.

On the academic side of things, we are proud to announce that we placed fourth out of forty different IFC fraternities on campus, with an average GPA of 3.35. We are hoping to keep this momentum going into the fall semester and beyond, and climb even higher up the rankings.

All in all, it has been a busy, yet fun and rewarding semester for us here at the University of Illinois. We are proud of all we have accomplished so far, and we are excited for what's to come!



Photos Above Top: New members and potentials after playing a fun game of paintball during fall rush.

Bottom: Action shot from our rush volleyball event that kicked off recruitment this fall.



Photo above: Brothers volunteering their time at the Sola Gratia farm on campus.



**2019 Alpha Chapter Exec Board** Photo above (L-R): Andrew Combs, Michael Hrabak, Michael Schwingbeck, Andrew Diefenbacher, Nathaniel Stoll, Ben Swanson, Mitch McCullar, Jonathan Kothe

**2019 Alpha Associate Members**

Photo at right: L-R): Don Powell, Andrew Combs, Zachary Mattingly, Ryan Feldt, Ben Dirst



Photo at right: Alpha chapter actives and alumni celebrating the Fighting Illini's upset victory over number 5 Wisconsin on Homecoming weekend.



Purdue University, West Lafayette, IN

**President's Report**

By: Chris Mikeworth

The members of Beta Sigma Psi are excited to be back at Purdue for another exciting semester. This fall we have two of our brothers graduating: Dillion Greiwe '16 and Luke Stevenson '15. Thanks to our Hingst Scholars Program we are happy to welcome 3 Freshman live-ins, and 9 total associate members this semester. This brings our numbers to 34 total members. We have 22 members living in the house and 12 members living out of house.



President: Chris Mikeworth

**Fostering Spirituality**

Our members continue to be active in the church community. We host bible study at the house once a week and our church attendance is on the rise. We also have a few of our members that hold officer positions within the church. We are always striving to foster and improve the relationship between our chapter and the campus church community.

**Academic Excellence**

In the Spring semester we were recognized for our academic excellence. We won the IFC award for Most Improved GPA. We ended the semester with a member cumulative GPA of 3.31 and a semester GPA of 3.21. This puts our chapter in 4th out of 48 IFC chapters. Ten of our members received semester honors and six made Dean's List.

**Campus Involvement**

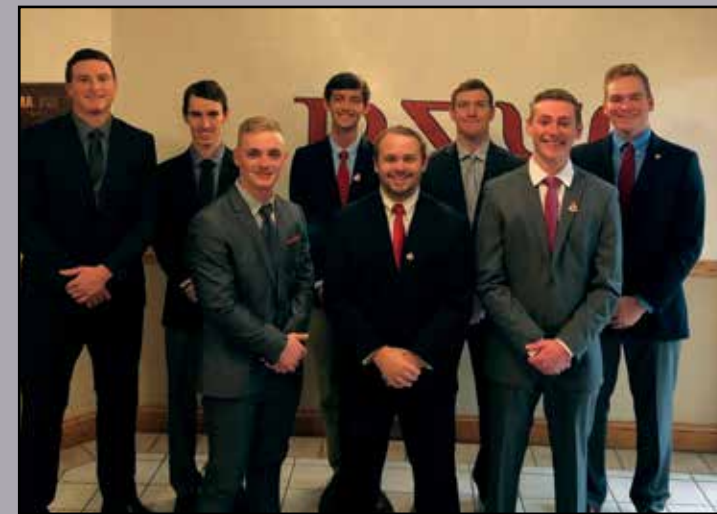
Our members continue our trend of campus involvement. We made the semifinals in many of the intramural sports we participated in. Almost every member is involved in one or more clubs on campus with some holding leadership positions within those clubs.

**Barbershop Quartet**

We were able to excel with our philanthropy in the Spring as well. We tried out a new event where a few of our brothers scheduled time at other Greek organizations and performed a barbershop quartet for them. We also look forward to continuing our annual Beta Sig Boiler Dash 5k race this Fall.



Beta members posing for photo after church service



**Beta Leadership Team**

Back Row (L-R): Patrick Hopkins (1st VP), Joshua Repogle (Treasurer), Case Evanson (Scholarship Chair), Collin Marshall (Risk Manager), Eli Ernst (2nd VP)  
Front Row: (L-R): Cameron Rasmus (Social), Chris Mikeworth (President), Matthew Geller (Social Chair)  
Not Pictured: Jack Adair (Philanthropy Chair), Peter Miller (Secretary)



At Left: Beta Chapter Members getting ready for rush.



**Our newest members at Associate Member Breakfast:**

Back Row (L-R): Richard Howey, Andrew Dobler, Isaac Lepley, Luke Passino, Dane Reid. Front Row (L-R): Landon Jones, David Hamady, Brett Parent, Travis Hockemeyer



The Ohio State University - Columbus, Ohio

## President's Report

By: Connor Moran, President.



**This year** has been a great one for Beta Sigma Psi, Chi Colony. Our fall semester started off with volleyball, cornhole, basketball, and Mario Kart rush events. We watched several football games together and with potential new members.

After we bid our newest members, we took a trip to Lutheran Memorial Camp where we had sessions focused on leadership, the vision for our colony, and spiritual health. All members got a chance to share about their lives and receive support from their brothers.

Socially, we have been able to hold a brotherhood event once every two weeks including TopGolf, trivia nights, and poker nights. We had our date party dinner at Brio and had a wonderful time celebrating with our brothers and their dates. Next up on the list of activities in intramural basketball and hockey.

Our membership grew by three this semester, bringing our totals up to 16 members. We have several men interested in joining next semester and we have been in close contact with them throughout the year. By Spring of 2020 we hope to have more than 20 people and apply for active Chapter status at MEF. Next year, we have six members living in the same house off campus, which will help to serve as our home base moving forward.

Our GPA for the most recent semester was 3.17, ranked 22nd among all Greek organizations on campus, and is tied for the men's Greek average. We have a dedicated scholarship chair, Derek Brady, who helps reserve study rooms and keep track of everyone's studying hours and habits. We have seen improvement during the course of this semester, and I look forward to seeing the results of our members' hard work.

Several of our men have been in the habit of meeting with Mike Havenstein, a local missionary with the Navigators. He has helped provide out leadership team with great insights and spiritual guidance. John Hatfield has come visit several times to give talks while we were recruiting, and also one on mental wellness. Several members of our colony were able to attend the Mini, a meeting of chapters at Beta Chapter. Our men enjoyed the brotherhood and friendship offered by all chapters attending and learned a great deal from them on how to become a successful chapter.

Our Colony has a strong culture of support, achievement, and leadership which I believe will help us thrive in the coming years. Our newly elected President, Bailey Caulkins, will help Chi Colony achieve its goals for the upcoming year of growing in number and impact our campus for good.

God Bless and Go Bucks,



Photo above: Assisting Gracehaven move into their new facility.  
Photo at right: Members touring Evan Williams Distillery in Louisville, Kentucky



Photo right: Activity at our Fall Retreat at Lutheran Memorial Camp

Photo left: Steak dinner at our spiritual advisor's house



### Leadership Team:

Photo far right: (L-R): Jackson Davis, Garrett Morse, Michael Tesmer, Bailey Caulkins, Connor Moran

### Associate Class:

Photo at right (L-R): Hadden Smith, Sam Allinger, Austin Glover



## President's Report

By: Andrew Wilmes



This fall semester kicked off well for Epsilon Chapter. As a result of summer recruitment and chapter recruitment efforts at the start of the semester, we welcomed a class of 25 associate members. Prior to the start of the semester, the chapter went on a float trip, played kickball, and played glow-in-the-dark dodgeball to build relationships with the new members and have fun. As the semester has gone on, the chapter has been very balanced in its activities and has stayed quite busy, per usual.

The chapter has held several social events over the last few months. Within the chapter, we have gone bowling, had ISU watch parties, and held game nights. Outside of the chapter, we were very active with all of the activities involved with our homecoming team. We held a swing dancing social with our homecoming team to get acquainted with everyone and kick off the season. Though we did not place overall in homecoming, we had many successes with Tau Kappa Epsilon and Pi Beta Phi.

Our members (36 in-house, 22 out) showed large participation for Day of Service, Blood Drive, and the annual Blue-Sky Days 5k. Many of our men participated in Yell Like Hell and performed well enough to move on to second cuts and get painted from head to toe. Andrew Wilmes and George Youngwirth served a main character for the performance, with Andrew winning an award for Best Line. Since homecoming, we have held a plus-one pumpkin carving social and our fall date party. Date party's theme this year was A Night in Hollywood and was held at Gatherings in Boone, IA.

During homecoming week, we welcomed back many alumni to celebrate the 70th anniversary of Epsilon Chapter with a banquet at Prairie Moon Winery. It was great to see all of the alumni who came back to celebrate and share their experiences with current members. The alumni surprised the actives by announcing a couple of new scholarships that have been endowed. Over 250 alumni and family members came to the chapter tailgate prior to the football game to celebrate and reminisce.

Our men have been active in service to the community and to Memorial Lutheran Church and have volunteered over 650 hours as of early November. We have continued to build a strong bond with Habitat for Humanity of Central Iowa, which is based out of Ames. Throughout the semester, our men have volunteered weekly at the Habitat Store, worked on a Build Day, and participated in a Rake and Run event. On the first weekend of November, we held our annual Beta Sig Brunch philanthropy to raise money for Habitat for Humanity. We

served brunch to over 200 guests and raised over \$2300. Within Memorial Lutheran, we have members involved in as Sunday School teachers, readers, ushers, and F.I.S.H. dinner volunteers. Our cook, John Anderson, directs a bell choir primarily comprised of Beta Sigs. Senior member Michael Flanscha also serves as the Parish Treasurer.

The weekend following the philanthropy, we held our Chapter Leadership Retreat. The theme of the weekend was pursuing greatness. Topics for discussion included goal setting,

Iowa State University, Ames, IA

invisible growth, the process of pursuing excellence, masculinity, ownership, and stepping into the arena to act. Current IFC President Zach Woodbeck and John Hatfield were brought in to lead sessions of discussion. The weekend was a great learning experience and an opportunity to grow our brotherhood.

Overall, the chapter has been working hard and having fun. We are proud of our successes this semester and are continuously striving to grow and improve while staying true to our values.



(Top Left) - Epsilon members getting ready to clean up the highway.

Left/below: Broomball Squad, Beta Sig Deadweight

Below: Yell Like Hell!!



### Epsilon Leaders

Photo at Right: Front Row: Tim Handlos, Justine Jones, Derek Van Roekel

Back Row: Stephen Sabharal, George Youngwirth, Andrew Wilmes, Jesse Martinson, A J Gambill, Colin McKay



### 2019 Associate Class

Photo Above: Row 1: (L-R) - Matt Stoecker, Dan Wu, Javier Payne, Alex Brown, William Rowen, Matt Sporre. Row 2: (L-R) - Justin Jacobs, Joe Beary, Patrick McCormick, Jared Greiner, Aidan Meyer, Caleb Black, Adam Lobberecht. Row 3: (L-R) - Jacob Fosse, Billy Nelmark, David Kasbeer, Josh Van Drie, Jarrett Loseke, Daniel Feldt, Matthew Greiner, Jackson Phillips, Rylie Hogan, Nate Anderson, Joe Badalucco.



## President's Report

By: Jeffry Reed - President

The first month of the semester has certainly gone very fast and it probably won't be slowing down anytime soon. The first couple of weeks were filled with serenades, football games, family day, and a block party with the four neighboring sororities.

Over the summer we received our community standards report which ranks us in 10 different categories from bronze to gold. Out of the 10, we received either a silver or gold on 9 of the sections.

The next event at our house will be on October 5th. After that we will have the homecoming parade on October 25th and the homecoming tailgate and game the following day. The only big event that our house has after that will be the semi-formal sometime in November and after that this semester will almost be over.

Our house has made several upgrades, from new doors to outdoor lighting, and a new sliding door in the laundry room. All of these events plus schoolwork on top of that will make for a very busy semester!



Photo above:

### Zeta Chapter 2019 Pledge Class

Front Row (L-R): Jayson West, Bryce Rogers, Jacob Williams, Ruiz Walker, Eric Lauffer, Cade Collins

Back Row (L-R): Will Smith, Frank Bergmeier, Derek Cronenwett, Abe Rottinghaus, Ryan Leadley, Zane Kaloupek

Photo at Left:

### Zeta Chapter 2019 Leadership Team

Front Row (L-R): Ryan Wolters, Seth Jennings, Jeffrey Reed, Cullen Moore, Jack Rottinghaus

Back Row (L-R): Korey Kneisley, Isaiah Washington, Connor Hicks, Dustin McDermott, Harrison Jones



Photo at left:  
Zeta Chapter 2019 Intra-mural Football Team



Photo above: Zeta Members participating in KSU Greek Week Cleanup of local trails, highways and the community in general.

## President's Report

By: Cameron Ziegler, President

The past year has been one of much change for Eta Chapter. Our Chapter house is almost finished with construction with much thanks to the alumni and actives who have put many hours of their own time into this project. Because of many generous donations from our chapter's alumni and actives, the Eta Chapter house includes a new addition, updated existing rooms, study areas like those in the campus library (TVs and whiteboards), and a new chapter room.

Our chapter house is 52 years old at this point, so this renovation that allows us to compete with all the other renovated chapter houses on campus was most welcome. Our members are very excited to be living in a new house, but one that still has that old house feel.

Homecoming was a success! Eta chapter enjoyed showing off the new house and meeting alumni. We were very excited to host all alumni including the Dean of Students who said that this was "One of, if not the best House Dedication Ceremonies he's been invited to." We are proud to be showing off the newest house on campus and are doing our best to recruit only quality gentlemen to live in it.

We participated in a ropes course down at the Lake of the Ozarks Scout Reservation and learned a lot about leadership and each other.

We are proud of our chapter GPA of 3.125 for the Spring 2019 semester which puts us 5th out of all IFC Fraternities, a slip from the 3.286 from Fall 2018 (2nd), but our GPA is still better than the All Student GPA (3.034) and All IFC GPA (3.040). With Fall midterm grades out, our GPA of 3.302 shows we are recovering fast. As Missouri S&T is an engineering school, 100% of our members are either Engineering or Computer Science majors.

I am very proud of all of our guys for being able to excel in such difficult areas of study. One member who has excelled at this school is Jason Johnson, as he was recognized for his undergrad research on additive manufacturing of glass. Congrats Jason!

When it comes to Community Service and Philanthropy, we are branching out this semester to create a bigger impact in the community than ever before. We are working with a local Veteran Association, Choices for People, an organization that helps handicapped people live fuller lives, the local animal shelter, raking leaves for the church elderly, and lastly our highway cleanup we've had for countless years.

We've changed our Fall Philanthropy and instead of "Infinite Tacos" we're doing the "Würst Fest" which is an Oktoberfest themed German food dinner that we thought would reflect the German and Lutheran heritage of our house. The proceeds this fall will be going towards Immanuel Lutheran to help with however they choose to serve the needs of the community.

This semester, we chose to welcome 19 New Members into our fraternity at Eta Chapter, increasing our membership to 54 men. Once again, we are very proud of our ability to recruit quality men into our organization. We've made sure that each individual understands and lives the values we hold dear before they are bid.

We believe that this is essential to establishing the culture that we want to see at Eta Chapter, and that these 19 men are shining examples of what we are doing here in Rolla. We are also proud of our new eight week long New Associate Member Program (AMP) that we've created. With the new AMP and our 1st VP of Membership guiding our newest Pledge Class, we are excited to see what they are capable of!

Lastly, I'd like to say I am very excited to lead our new Executive Board as we navigate this new year for Eta Chapter. Spiritual, Scholastic, Social, and Service will be our guiding principles this year as we do our best to be an example of what Beta Sigs can achieve when striving to be the best they can be!

### Animal Shelter Volunteers (At Left)

Volunteering at the Kitten Division (L-R), Neil Bruhn '18, Michael Allgeier '19, James Dukas '19, Tyler Feldewerth '16



Photo above:

### Fall '19 Executive Board

(Back Row, (L to R): Corey Smith '18, Justin Peper '18, Noah Aschmann '17, Henry Skouby '18, Neil Bruhn '18

Front Row - (L to R): Paul Schambach '18, Matt Zeuschel '17, Cameron Ziegler '16, Nick Asbury '17, Daniel Schnelle '17



### The Ropes Course (At left)

Eta members going over *The Wall* as part of completing the Ropes Course:



### Pledge Class of Fall 2019: (Photo at right)

(Back Row - (L to R): Jack Duffy, Dale Haberstroh, Tyllen King, Zach Dunkle, August Hummert, Ethan Boller, Harrison Diffley, James Dukas, Michael Allegier, Joseph Rethemeyer

Front Row - (L to R): Zach Hartfelder, Braden Nolfo, Grey Arns, Kory Debold, Alex Gambill, Dominick Bonacorso, Cameron Niemeyer, Michael Vedder, Thomas Skouby



### President's Report

By: Michael Phillips



The year of 2019 has been a testing year for the Iota chapter of Beta Sigma Psi. During the Fall 2018 semester the Iota chapter was temporarily suspended and then put on probation for the entirety of the 2019 calendar year. There have been many challenges to overcome this year and we are very proud of how hard our leadership team, alumni board, and general membership have worked in order to ensure a prosperous future for the Iota chapter.

To start off the 2019-2020 school year, Iota has welcomed 9 associate members to our brotherhood. This number is not as high as previous classes or what we expected, however we believe that these 9 men are of very high quality and will contribute greatly to the house in the near future. Prior to the fall recruitment season we had increased the standards that are required in order to receive a bid that previously were not in place, such as a certain high school GPA, ACT/SAT, leadership experiences, and other statistics.

We are proud to announce that one of these new members won a \$2,000 grant from the IFC at the University of Missouri to help fund a philanthropy "Greeks Got Talent" in Spring 2020 that will benefit the local Habitat for Humanity chapter. Following fall recruitment our recruitment team has been hard at work searching for potential new members to join our Spring 2020 class and has already signed several very early in the recruitment season.

Total house membership currently sits at 49, with 24 living in the chapter house. Following the Spring semester 2019 we saw a GPA increase of .2 from a 2.79 in the fall to a 2.989. This number is just slightly below the all-male average of 3.054, at the University of Missouri and ranks 20th out of 30 IFC fraternities on campus. We are hopeful that with our new scholarship program and our increased recruitment standards will result in an increase once again following the fall 2019 semester.

Over the past year we have participated in many social events within the chapter house and across campus. Including the participation in the one of the biggest traditions at Mizzou, homecoming. We were happy to be paired with the women of Sigma Kappa and the men of Phi Kappa Psi this year, hosting many of the activities and preparations at our chapter house. Within the house we have hosted several brotherhood events, social events, and our annual Dad's Weekend on November 16th.

As the semester comes to an end we approach election season and are very excited to see the interest in running for leadership roles among underclassmen and upperclassmen. We are confident that these newly elected leaders will do great things for the Iota Chapter of Beta Sigma Psi.



#### Leadership Team:

Photo above (L-R): -Tyler Bradley (Treasurer); Sotiris Korakis (Scholarship Chair); Nathan Wooderson (Risk Manager); Shane Brannigan (Secretary); Michael Phillips (President); Canon Lampkin; (Jr. Recruitment Chair), Eric Hoagenson, (1st Vice President); Will Reiher; (2nd Vice President); Jack Allen; (Sr. Recruitment Chair). Not Pictured: Cooper Hain (Jr. Recruitment Chair).



#### Fall 2019 Associate Class:

Photo Above (L-R): Chris Chandler, Mason Couch, Dominic Barbosa, Jackson Atkins, Will Potter, Stefan Derra, Sam Porten, Matthew Coble, Jacob Peer.



Photo Above: Iota Members at Fall 2019 Game in Suits

### Recruitment Update

By: Kade Brennaman: Recruitment Chair

During the past year, we hosted recruitment events like dinner at local restaurants, bowling nights, and trying our hand at Axe Throwing here in Lawrence which worked as great recruitment events. They provided a fun and competitive way for both active members and potential new members to socialize. We signed 4 associate members over the spring semester, and 3 associate members in the fall semester. We look to increase our success in the coming year.

For this upcoming spring semester, I plan to utilize University resources such as the KU Ambler Recreation Center to set-up basketball and soccer tournaments. We are currently pursuing five potential new members, with the goal of signing eight in the spring

### President's Report

By: Connor Wilcox



As I start my term as president of NU Chapter at the University of Kansas, I have witnessed the results from the hard work and dedication of our previous members. They laid the framework needed to achieve another successful year as we continue to grow.

We currently have 24 quality members for the 2019-2020 academic year. In the past year, we continued to push the boundaries. In the Spring of 2019, our men achieved a chapter GPA of 3.51, retaining our title as the top-performing academic fraternity on campus. Additionally, two of our associates received the highly competitive "Most Outstanding New Member" awards given at the KU Greek Contest.

Not only have we been successful within our chapter, we have also been heavily involved in the KU community. Thanks to another successful "Relay for Life" Philanthropy, we have been able to raise over \$1,300 to donate to the American Cancer Society.

This past year our members served the Lawrence community by donating over 700 hours of their time. Additionally, in our 4th year participating in Homecoming, we continue to develop our relationships with other Greek organizations. It is clear the KU Greek community not only recognizes Beta Sig's presence, but they appreciate our impact on the community.

I am proud to say that through the commitment, passion, and diversity of our members we were able to achieve our founding fathers' goal in 2014 - to create the best fraternity experience on campus. Every member and associate, past and present, helped us achieve our goals this year. As we look to have another strong recruiting effort, I am certain our legacy of excellence will continue. I look forward to the work our men will achieve, Rock Chalk!

#### Beta Sig Pie Sale

Photo below: Pie Sale supporting the American Cancer Society hosted at Good Shepherd Lutheran Church



#### Activated Associates Fall 2019

Photo below (L-R): Kasra Alizadeh, Connor Wilcox, Alejandro Troconis, Sam Gutierrez.



#### Nu Chapter 2019 Executive Board

Photo above

Back (L-R): Kade Brennaman, Daniel Chacon, Robert Cajas  
Front (L-R): Ben Hudson, Connor Wilcox, Bennett Vavak

#### Relay For Life 2019

Photo at right:

Relay For Life philanthropy event for the American Cancer Society Canned Food Drive

Photo Below right: Family Day Tailgate Party in Lawrence for Nu Members and parents.

#### Canned Food Drive

(Photo below)

Collected over 600 food and hygiene items for the Lawrence campus pantry  
(L-R): Bennett Vavak, Robert Cajas, Brandon Murray





## President's Report

By: Mason Shaffer

### The Omega Chapter

has finished up yet another successful year. 2019 saw us achieve many feats: we've raised over \$20,000 for charity, achieved top GPA among fraternities for the 6th straight semester, won 5 intramural championships, and welcomed 45 new men into Beta Sigma Psi.

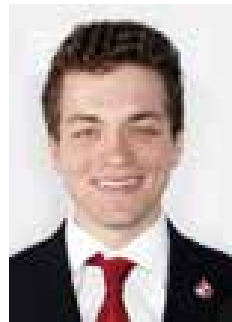
Academics are still strong at Omega. We achieved top GPA in the spring of 2019 among all IFC fraternities with a 3.51, which has made it six semesters in a row with the top mark. Our chapter culture is supportive to academic achievement and many brothers study together, take classes together, and tutor each other for the betterment of themselves and the chapter. We are on track to hold the top GPA slot this fall as well.

Intramurals have been a focal point for Omega Chapter in 2019. Indiana University offers 15+ intramural sports and we've had at least two teams in almost every sport. We are competitive, but all brothers get a chance to play if they want to. We've won five championships this year: softball, kickball, dodgeball, battleship, and tennis. Additionally, in April our Little 500 bike team had their best finish ever in the race, finishing 16th out of 33 teams. At the halfway point of the race, the team was in 1st place! The team has continued to practice tirelessly and is seeking a top 10 finish in April 2020.

2019 also saw the most successful philanthropy in Omega Chapter history. In April, we hosted our second annual Dodging Addiction tournament in support of the Amethyst House, a local drug addiction recovery facility located in Bloomington, IN. It was a dodgeball tournament held at our house which helped raise over \$15,000! We are already looking for ways to make it even bigger and better next spring.

This Fall we started a new philanthropy event called Fall Fest to benefit Habitat for Humanity. For the event, we partnered with a sorority and hosted guests at our house for fall-related festivities like food and pumpkin painting. This event raised over \$7,000! Between these two events, Omega Chapter raised over \$22,000 for local charities in 2019.

Our service efforts this year have been substantial. Some of the events we have participated in have been the Hoosiers Outrun Cancer 5k, clearing land for Lakeview Ministries Youth Camp, activities benefitting Amethyst House, anti-hazing prevention talks, Safe Halloween, and a Habitat for Humanity



build. In sum, Omega Chapter members accumulated over 300 service hours under the Beta Sigma Psi banner. Overall, Omega Chapter has had a great year, highlighted by many accomplishments. We look forward to growing as brothers and continuing our previous successes.

### Recruitment update

The Omega Chapter had another successful year of



Volunteers for a local youth camp run by Lutheran Ministries.



Omega Chapter won the softball intramural championship at Indiana University in fall 2019.



**Associate members:** Photo Above: (L-R) Alden Metzger, Alex Henderson, Ben Mckeown, Ben Vorisek, Ethan Yost, Bryson Meek, Cameron Line, Cameron Segura, Cody Cox, Eli Economou, Elvin Irihamye, Emerson Dietsch, Jake Schoenegge, Jonathan Walts, Josh Gerstein, Kyle Backus, Max Roesler, Michael Whelan, Nicholas Balda, Paul Smith, Preston Cobos, Rahil Verma, Stefan Hinz, Vance Roudebush, Zaeed Arif, and Tommy Dugan.

recruitment. Between fall and spring recruitment, we are set to activate 45 new brothers into Beta Sigma Psi. We have new brothers from over 10 states! There are plenty of leaders amongst them, so we are looking forward to the roles they will be taking within the Chapter in the future!

We are planning yet another large associate class in the Spring as well. We are looking to take between 20 and 25 men to ensure the house is perennially full.

## President's Report

By: Aidan Broyles '21

### Howdy!



When the idea of recolonizing the Phi Chapter of Beta Sigma Psi was first suggested at the Men's Bible Study of University Lutheran Chapel in January, 2019, it initially sounded like an impossible task for a small group of 7 guys. However, thanks to overwhelming support from Beta Sigs across the country, as well as the strength of the bonds formed between the guys at the chapel, this once impossible dream is slowly becoming a reality.

It is interesting to observe the overwhelmingly Christian culture amongst the Texas A&M student body. With established events such as "Breakaway" (a large bible study that occurs every Tuesday night in Reed Arena), and "Impact Retreat" (a camp for incoming freshmen and transfer students that seeks to help the new students grow further in their faith), there is a large draw for students to seek out Christian community through on-campus organizations. As Texas A&M continues to grow, it seems as if there is no better time than now to start recolonizing a Beta Sigma Psi chapter at A&M.

Currently, there are 9 guys who are actively serving on the colony's leadership team. (In total, there are 12 members in the colony.) These 9 men have committed to putting in extra hours to get the new colony up and running. Texas A&M has a very thorough process for creating new student organizations, which has allowed the group to focus on laying a solid foundation for the years to come. As the colony continues to grow, we will begin recruiting on campus and at local LCMS churches in the College Station area.

Spiritually, the group is heavily involved with University Lutheran Chapel in College Station. As the chapel seeks to call a new campus pastor, many of the guys in the Beta Sig leadership team have stepped up to help serve on the call committee, as well as lead worship services every other Sunday. In addition, the guys lead weekly bible studies at the chapel and volunteer at other churches in the Bryan/College Station area.

Scholastically, the group is projected to be in the upper range of Greek fraternities at Texas A&M. With a Spring 2019 GPA of 3.53, the group came in well above the average GPA of 3.06 from all the fraternities on campus. Furthermore, many of the guys are involved in academic honor societies, and continually strive for high grades in challenging majors.

Despite the group's small number of members, the group has been diligently organizing social functions on campus. The group regularly hosts tailgates before home football games, which has become a favorite with the members of University Lutheran Chapel and the guys in the group alike. The group is currently looking to have their first formal in the upcoming Spring 2020 semester. In addition, the colony has put in several volunteer hours through organizations such as the Brazos Valley Food Bank, where five of the guys assembled a total of 1,622 meals. The group also supports

the volunteer projects regularly hosted by the University Lutheran Chapel.

In conclusion, the Phi Interest Group has bright hopes for the future. We are excited to see how this group develops and grows, and what the future has in store for Beta Sigma Psi in College Station!

Thanks, Gig'Em, and God Bless,



Photo above:(L-R) - Marshall Allen and Nehemiah Hein carve a brisket prepared for the Beta Sig tailgate before the A&M/Clemson football game.

### Ice Skating Brotherhood Night

(at right)  
From (L-R): Aidan Broyles, Jim Moynihan, Cody MacMillin, Rob Choate, Nick Halbert

### Phi Colony Leadership Team

(See Photo Below)

Back Row (L-R): (Andrew Borseth, Marshall Allen, Nathan Wagner, Aidan Broyles, Nehemiah Hein)

Front Row: (Fredric Hinkle, Spencer Berglund, Cody MacMillin). Not Pictured: Jim Moynihan



Photo above: Members of Phi Colony prepared 1622 meals at the Brazos Valley Food Bank. From (L-R) - Andrew Borseth, Spencer Berglund, Aidan Broyles, Talon Lewis, Nathan Bromlow





# The National Archives

by: Rod Thompson,  
National Archivist

The only reason I have the National archive collection in my basement den is because I refused to allow anyone to give up our archives to some other entity. We would have lost control over our historical records and someone other than our alumni would decide what to keep and what to throw away. I just couldn't let that happen.



Unfortunately, that idea is still circulating because an alumnus asked me just last month why we just don't give all of our records to someone else. I will keep the archives for a little longer until I can sort through the paperwork and the artifacts, decide what is historical and useful to us, and what can be let go.

After making the commitment to keep the archives, then it was a matter of getting all of the records in one place. When Kirk Meyer (Alpha – Past National President, Lienemann Honoree and currently serving on the Educational Foundation Board) was President and I was the Executive Director we closed the office in Columbia, MO. Whatever we found that belonged to the archives started the collection in my basement.

After asking what happened when the office in St. Louis was closed, we discovered that most of those records were being held by Dave Jackson (Zeta – Lienemann Honoree, Past National President, currently serving on the Educational Foundation Board).

A trip out to Kansas was made to collect those boxes and records. Making that trip with me was another National Board member at the time, Matt Kreps (Zeta), and I can't recall why Matt was with me other than he had an interest in preserving our history as did I.

Then just a few years ago Brent Siefert (Beta – Past National Executive Officer, Lienemann Honoree and currently helping out with expansion efforts) and I connected so he could give me a box full of the oldest part of The Gold Rose collection. Brent also has a keen interest in the history of the Fraternity and he recognized we needed to get all of our artifacts in one place.

Over the years there have been several alumni who have donated some rather spectacular additions to our archive collection. Tom Schlange (Delta – Past Executive Director) and I were all set for an eBay bidding war but Tom won. The prize was an artwork concept of the chapter home for Alpha that was put up for auction in the Great Depression. Tom was always on the lookout for trophies and plaques that were also put up for auction but we never located any of them. Tom also safeguarded the archives while he was the Executive Director and the bulk of our collection made it to my basement due to his interest and due diligence.

Del Lienemann Sr. donated a "mint condition" second edition of the associate member manual. I will confirm this when I study the archives, but Del told me once that a lot of our original documentation as a Fraternity was modeled after his wife's experiences from the Pi Phi Sorority (if I remember the story correctly). When Del was the Executive Director, he made duplicates and triplicates of all his correspondence because carbon paper was the tool of the day,

so in one box I'll find one copy and in another box I'll find the recipient's original of Del's letter.

The most recent addition to the collection was donated by Larry Edwards (Zeta – Past National President, Lienemann Honoree and Tiemann Honoree, currently serves on the Housing Foundation with other leadership emeritus from the Fraternity).

The photo included with this article (see below) depicts a "sister pin" presented to Martha Edwards at the 67th National Convention for her work in publishing the National Fraternity Song Book (a copy of this Song Book is also in the archives). Included in the photo is a "plain sister pin" that I was able to purchase on eBay to add to the archive collection.

I was able to purchase a 14-carat gold fraternity pin on eBay for the archive collection. I made the mistake of loaning this to another alumnus at one of the National meetings and it was never returned to me. I am hoping that this treasure will be returned to the archives before I meet up with him at one of the future National meetings. I will never make that mistake again.

Another disappointment was when someone burgled the Iota Chapter home and stole the Founders Cup – a historical piece that we had decided to use and encourage our chapters to take an interest in the National Awards process. I have been on the lookout but that artifact will most likely never be found. I have decided not to "loan out" any of our artifacts because of the likelihood of getting damaged, stolen or lost.

Trying to include everyone who has generously donated materials and artifacts to the collection would not be possible because there have been so many who have remembered to send their items of interest to me. The completion of the review and cataloging will be my next project. I will be ending my service as the Educational Foundation Treasurer in the fall of 2020 just after I send the paperwork to our accountant to prepare the IRS 990. My first task will



be scanning our collection of The Gold Rose publications into pdf documents so we can post them online.

By 2022 or 2024 I should be done going through the boxes and organizing the collection. I may not have the energy to write the history of the Fraternity based on our archive records so someone else may have that project at some future date.

What are we looking for to add to the National archives? A great question. In most cases when I search the archives some materials are already in the collection. I won't know until a generous alumnus asks me so I can do the research and see if this happens to be a rare find.

My email address is [rod.thompson@charter.net](mailto:rod.thompson@charter.net) and my cell phone is 618-210-8905. Please call me and we will see if your paperwork or artifact will add to our collection.

## NOTE:

Below are photos of Iota Chapter Party Favors collected by Steve Hick, our national Scholarship Director, that he plans to donate to the national archives. Do you have items that you would like to donate?



Matching Glassware



Wine Bag



Shot Glass



Personal Mug



## Beta Sig Annual MEF Awards Dinner 2019 Meeting in Louisville, Kentucky



Photo Below:  
The 2018 Keynote Speaker at the Annual Awards Dinner is Gerry Wiegmann, who is an alumnus of Eta Chapter.

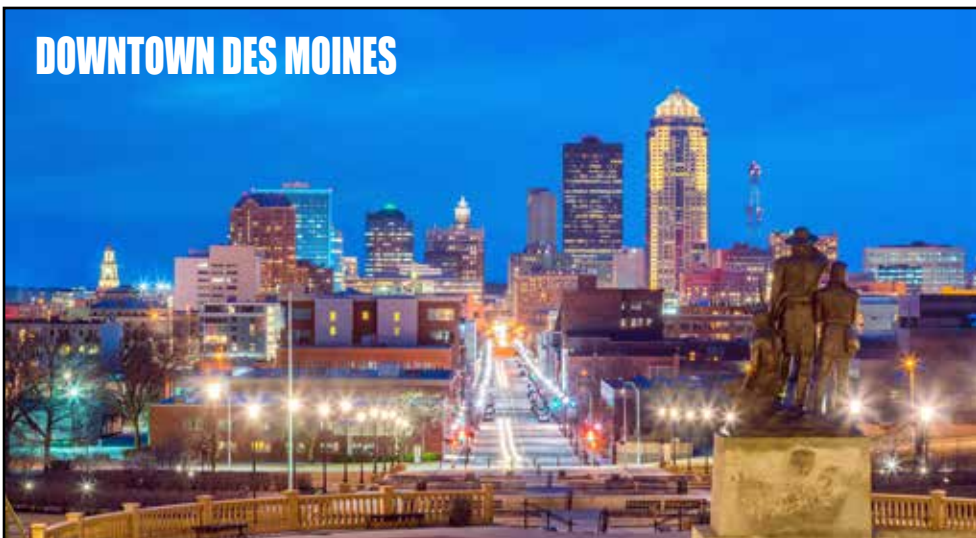


### AWARDS PHOTOS

This collection of 2019 MEF photos from Louisville, show the attendees receiving Beta Sig Awards for their outstanding performances during the previous year.







**DOWNTOWN DES MOINES**

**2020 MEF in Des Moines, IA in Mid February**

The 2020 MEF is all set for Des Moines, Iowa and the location will be at the **West Des Moines Marriott**. Des Moines is growing and vibrant and will offer plenty of entertainment and events that will allow brothers to reconnect with old acquaintances while building bonds with others for the first time. Visit [www.catchdesmoines.com](http://www.catchdesmoines.com) for more information on the area.

The MEF will start on **Presidents Day weekend** this year. Programming will run Saturday February 15th - February 16th with arrivals on Friday night. The banquet will remain on Saturday night. The Annual Awards Ceremony will follow the dinner. Active Chapter and Alumni **Registration information**, as well as **preliminary scheduling** can be found at:

[mef.betasigmapsi.org](http://mef.betasigmapsi.org).

The **Membership Education Forum (MEF)** offers a unique opportunity for Beta Sigs of all ages from across the country to meet. **The MEF serves three important purposes:**

1. Educating Associates, Actives & Alumni volunteers in key areas of Fraternity life.
2. The Annual Meeting of the National Council
3. Celebrating the success of our Active Chapters and Distinguished Alumni at the Annual Awards Banquet.

**Find us at:**

**West Des Moines Marriott  
1250 Jordan Creek Pkwy West Des Moines, IA 50266**

**Registration:**

will **End Saturday, February 1st, 2020**. Go to: [mef.betasigmapsi.org](http://mef.betasigmapsi.org) to sign up.

**Your Educational Foundation Donations At Work  
Eta Chapter Re-Dedicates Chapter House**

**October 5th**, 2019 marked a special day in the history of Eta Chapter as our home at 2 Fraternity Drive was rededicated to the members of Beta Sigma Psi; its undergraduates, alumni, family, and friends who through God's will and generosity made the remodel and expansion possible.

Over 200 alumni, actives, family, friends, and honored guests attended the celebration weekend. Weekend festivities started early on Friday with a golf tournament at Oak Meadows Country Club, organized by the Chapter. Following the

Continued on Page 31



**Rolla Homecoming was a major event in 2019 as they rededicated their chapter after major expansion and remodeling of the existing facility. See photos and story on page 31.**

**Annual Awards Banquet  
Keynote Speaker  
Manfred Philipp, Ph.D.,  
Alumnus of Theta Chapter**

Manfred Philipp was President of the Board of the Fulbright Association in 2018, until he resigned in December of that year. He is former Executive Director of the CUNY Academy for the Humanities and Sciences and a former Trustee of the City University of New York (CUNY). He was chair of CUNY's University Faculty Senate in 2006-2010 and President of the German Academic Exchange Service Alumni Association of the US in 2013-2014.



Manfred Philipp Ph. D.

Dr. Philipp is Professor Emeritus and past department chair of chemistry at Lehman College in New York and Professor Emeritus in the Biochemistry and Chemistry Doctoral Programs at the CUNY Graduate Center in Manhattan. As a Fulbright scholar in 2005, Dr. Philipp taught bioinformatics and biopharmaceutics at the Catholic University of Portugal. As a Fulbright scholar in 2012-2013, he did research on multidrug resistant bacteria at the Patan Academy of Health Sciences in Kathmandu, Nepal.

Dr. Philipp received his Ph.D. in Biochemistry from Northwestern University and his B.S. in Chemistry from Michigan Technological University. Dr. Philipp has been Program Director for the National Institutes of Health-supported, research-based student support programs Minority Biomedical Research Support (MBRS), Minority Access to Research Careers (MARC), and the High School Summer Research Apprentice Program.

He was co-Program Director of the NIH-supported Bridges to the Baccalaureate at Bronx Community College and Lehman College. He has also served as national president of the MBRS/MARC Program Directors Organization.

His scientific research concentrates on protein modeling and enzyme inhibition, with emphasis on enzyme inhibitors of potential pharmaceutical value.

**National Educational Foundation Donations Significantly Help Beta Sig**

**Zeta Chapter Scholarships and Educational Funds**

By: Gary Raffety '62 - Editor

Zeta Chapter has two funds set up with Beta Sigma Psi National. The **Zeta Chapter Scholarship fund** and the **Zeta Chapter Educational Foundation Fund**. The Scholarship Fund can only be used for student scholarships and currently will sustain \$5,000 per year in awards. The Educational Foundation Fund can be used for any educational purposes such as scholarships, student leadership, training, computers, study rooms, networking and the like. The Zeta Educational fund will currently sustain \$2,000 per year in grants. Both of these funds are 100% tax deductible for tax itemizers.

During the past two years, Zeta Chapter has granted a total of 17 scholarships (12 from Beta Sig Foundation - 5 from KSU foundations). We have honored incoming freshman as well as members of the sophomore, and junior classes with awards, ranging in value from \$250 to \$750 ??)

As our MAC alumni donations continue to grow the principal balance of the endowments, we will increase both the number and amount of the scholarships granted. It is important for you to know that your past and future donations have and will continue to make an enormous positive difference to Zeta chapter.

All Beta Sig chapters compete with other fraternities for new members and scholarships are one way for us to attract top high school students entering college for the first time. Once in the house, our highest achieving members are rewarded with scholarships for the reasons listed below

**How are selections made?**

Candidates for scholarships are nominated by their fellow house members for grants in these basic categories.

- Incoming Freshman top 10% of class,
- High First semester GPA,
- Outstanding Associate Member,
- Outstanding Sophomore
- Outstanding Junior
- Phil Krug Junior Leadership Award,
- or Phil Krug Senior Leadership Award.

**Process for selections:**

The MAC Board and alumni members review awards and make the final selections. Scholarship Awards are granted only to members who are living in the chapter house. Rewards are processed by the National BSP Foundation board member, Rod Thompson. The awards are sent directly to Kansas State University to the accounts of the students.

Zeta also has two scholarship funds that are administered by the Kansas State University Foundation. The Bret Mock – Beta Sigma Psi – Honor

Scholarship and the Mark Torluemke Memorial Scholarship. Both of these funds were started by generous individuals and family members as memorials for their son and grandson that lost their lives while students at K-State and members of Beta Sig. Both funds, combined, will currently sustain funds of approximately \$3,000 per year in awards.

The intent of these funds is to promote and encourage Leadership and Scholarship among the chapter members. Your donations are needed now more than ever as competition for new members is higher than ever and scholarships help to attract new members. And, it goes without saying, that we appreciate your donations very much.

**How do Donate:**

**MAC ALUMNI ONLY:** To donate, make your check payable to:

**BSP National Educational Foundation** and note in the lower left for: **Zeta Chapter Sub-Fund.**

**Mail your check to:**  
**Gary Raffety,**  
**9228 W. 73rd Street,**  
**Shawnee Mission, KS 66204**

**NEF Funds Epsilon Chapter Annual Retreat**

By: Andrew Wilmes '20 - Epsilon President

Each fall, Epsilon Chapter hosts a chapter leadership retreat at a retreat center near Ames. The retreat center provides us a venue to get out of Ames for the weekend and spend time with one another.

The weekend event involves spiritual growth, leadership development, chapter awareness, and some fun activities with brothers. Examples of presentations and workshops include goal setting, ownership, masculinity, the pursuit of excellence, and evaluation of the state of the fraternity. T

The presidents of the chapter have brought in John Hatfield, alumni members, and campus leadership to speak and work with the chapter. The retreat center provides food for the time we are there along with recreation activities like glow in the dark dodgeball, bonfires, basketball, and ziplining. The Education Foundation has been crucial in our ability to continue hosting this event.

**Some Facts About Charitable Giving  
\$410 billion to charities in 2017,**

**It may** interest you to find out some facts about Americans and their charitable donations. It might give you some idea of where you fit into the mix.

1. 31% of donors worldwide give to NGOs, & NPOs & charities located outside of their country of residence.
2. 41% give in response to natural disasters.
3. Education giving saw relatively slower growth (3.6%) compared to the strong growth rates experienced in most post-recession years. In each of the years 2014 and 2015 education giving grew by more than 8 percent.
4. Environment and animals charities; arts, culture and humanities organizations; international affairs non profits; and health causes experienced the largest jumps in contributions.
5. Total charitable giving grew 4.1% in 2016 and 5% in 2017.
6. **Foundation giving** in 2016 increased to \$58.28 billion – a 3.5% increase from 2015.
7. Donations to **Education charities** was up 6.2% to \$58.9 billion (14% of all donations).
8. Donations to **Human Services** charities were up 5.1% to \$50.06 billion (12% of all donations).
10. **Foundations** saw an increase of % to \$45.89 billion (11% of all donations).
11. Health charities experienced an increase of 15.5% to \$38.27 billion (9% of all donations).

12. Arts, Culture and Humanities saw an increase of 8.7% to \$19.51 billion (5% of all donations).
13. Charities that focus on the Environment / Animals saw an increase of 7.2% to \$11.83 billion (3% of all donations).
14. **Historically, Religious groups** have received the largest share of charitable donations. This remained true in 2016. With the 2.9% increase in donations this year, 31% of all donations, or \$127.37 billion, went to Religious organizations.
15. In 2017, the largest source of charitable giving came from individuals at \$281.86 billion, or 72% of total giving;
16. Foundations (\$58.28 billion/15%), bequests (\$30.36 billion/8%), and corporations (\$18.55 billion/5%).
17. In 2016, the majority of charitable dollars went to religion (32%), education (16%), human services (12%), grantmaking foundations (11%), and health (9%).
18. Environmental and animal organizations experienced the largest giving increase in 2016, receiving 7.2% more than the previous year.
19. Charitable giving accounted for 2.1% of gross domestic product in 2016.
20. Historically, charitable giving rises about one-third as fast as the stock market.

Continued - middle page 27



**The Beta Sigma Psi Educational Foundation** would like to sincerely thank all of our donors. The following is a list of our contributors during the Educational Foundation's 2016 Fiscal Year (July 1, 2016 through June 30, 2017):

**Founders Society**

- Alpha Chapter**  
John Bernhardt  
Craig Sorensen  
Erik Steinbrenner
- Beta Chapter**  
Edwin Beschereer Jr  
Brian Bosma  
Paul Davis  
Wade Ledbetter  
Lcdr. Dennis Schepman  
R. Brent Seifert  
Mark Stavnes  
Ryan Thieme  
Alvin Wilken  
James Winkelman
- Delta Chapter**  
Scott Gesell  
Roger Meyer
- Epsilon Chapter**  
Duane Grummer
- Mark Hofer  
Kent Lage
- Zeta Chapter**  
Charles Blaser  
Dr. Howard Erickson  
David Haake  
Michael Jackson  
Joel Mueller  
Jeffrey Pierson  
Haven Rolander  
John Skarda
- Eta Chapter**  
Steven Jackson
- Iota Chapter**  
Warren Pflantz  
Joseph Potts
- Mu Chapter**  
Robert Hillard
- Omega Chapter**  
Philip Krug  
Cory Baumhardt

**Concordia Club**

- Alpha Chapter**  
Terry Brakhane  
Edward Bucnis  
Brian Bunte  
Ralph Folkerts  
John Foote
- Brian Garkie  
Wade Harrison  
Robert Herschbach  
Judge Lloyd Karneier  
Patrick Kirchhofer  
Ardell Nease

**Editors Note:**

It is common today for most fraternities to offer scholarships to all new associate members. We need to compete in this process for new members, so your donations to the NEF are critical if we are going to compete. Remember, these are tax deductible donations, so please donate and help our guys compete with the big boys.

**Membership Levels:**

Founders' Society: \$500+; Concordia Club: \$250 - \$499; Wittenberg Club: \$100 - \$249; Patron: \$60-\$99; Member: \$30-\$59; Donor: \$1-\$29.

- Ryan Ruwe  
David Scheiter
- Beta Chapter**  
Jake Allen  
Raymond Baumruk  
Ted Gruenhagen  
Richard Guhl  
Garth Hawkins  
Daniel Porter  
Matthew Sommerfeld  
Jeffrey Van Voorhis  
Larry Varland  
Norman Voss  
Paul Wagner  
Jared Witte
- Delta Chapter**  
Lee Anderbery  
Wayne Anderbery  
Mark Hahn  
Jay Holle  
Douglas Martin  
Rick Schmidt

**Epsilon Chapter**

- Kent Dvorak  
Rudolf Herrmann  
William Jentzen  
Jason Lantz  
Michael Leland  
Steve Vander Sluis

**Zeta Chapter**

- William Jorns  
Joshua Wolters

**Eta Chapter**

- Douglas Fleiss  
Arthur Giesler  
Michael Roth

**Iota Chapter**

- Warren Harms  
Morris Heitman

**Omega Chapter**

- Andrew Rusch

**Chapter Donations**

**Alpha Chapter - \$8,723.00**

**Founders' Society**

- John Bernhardt  
Craig Sorensen  
Erik Steinbrenner

**Concordia Club**

- Terry Brakhane  
Edward Bucnis  
Brian Bunte  
Ralph Folkerts  
John Foote  
Brian Garkie  
Wade Harrison  
Robert Herschbach  
Judge Lloyd Karneier  
Patrick Kirchhofer  
Ardell Nease  
Ryan Ruwe  
David Scheiter

- Dale Durfey Jr  
Roger Fliege  
Daniel Jenkins  
Joel Kahling  
Scott Kempin  
Michael Kesselmayer  
Duane Kolbus  
Robert Mulch Jr  
Chris Nack  
Russell Niemi  
James R. Pitman  
Gary Showers  
Kevin Smith  
Timothy Tappendorf  
Gregory Wyss

**Patron**

- Blake Aper  
Jerald Borchers  
Larry Heyen  
Kevin Kothe  
Randolph Lange  
Eldon Mattick  
Donald Sommerfeld

**Wittenberg Club**

- Joshua Baggett  
Don Bienfang MD  
Robert Bloechle  
David Campbell  
Joseph Doninger

**Member**

- Randall Ehlers  
Warren Hecht  
Richard Heinkel

- Vitalis Hoffman  
Alexander Johnson  
Mark Keel  
Stanley Kirchhofer  
Mark David Nuernberger  
Helmut Welke  
Lee Yarbrough

**Donor**

- Norman Harms

**Beta Chapter \$19,527.84**

**Founders' Society**

- Edwin Beschereer Jr  
Brian Bosma  
Paul Davis  
Wade Ledbetter  
Lcdr. Dennis Schepman  
R. Brent Seifert  
Mark Stavnes  
Ryan Thieme  
Alvin Wilken  
James Winkelman

**Concordia Club**

- Jake Allen  
Raymond Baumruk  
Ted Gruenhagen  
Richard Guhl  
Garth Hawkins  
Daniel Porter  
Matthew Sommerfeld  
Jeffrey Van Voorhis  
Larry Varland  
Norman Voss  
Paul Wagner  
Jared Witte

**Wittenberg Club**

- Dr. Robert Anderson  
Timothy Beschereer  
Kenneth Bischoff  
Col. Ronald Bischoff  
William Braun  
Randall Broady  
Dale Bultemeier  
William Bussing  
Mark Buuck  
John Cooke  
Larry Dennis  
Steven Ehrman  
Robert Frey  
Albert Germann  
Albert Grathwol  
Clifford Greive  
James Harless  
Alan Hedegard  
William Hitchens

- Jeffrey Hoeverer  
Alan Jung  
Jay Kammeyer  
Rudolph Kather  
Rev. Vernon Koehlinger  
Dewayne Laughlin  
Kenneth Luedtke  
Donald Meinheit  
David Molnar  
James Muhl  
Greg Perko  
Roger Pollert  
Neil Nolting  
Roger Schepman  
Ronald Schroeder  
Roland Teuber  
Jon Whisler  
Steven Witte

**Patron**

- Robert Hoch  
David Struckman-Johnson

**Member**

- Timothy Bonitz  
Kevin Brueck  
Jeffrey Decker  
Matthew Helm  
Nicolas Humphrey  
Ryan Kammeyer  
Delmar Kloeker  
Richard Krampe  
Edward Laughlin  
Kevin Mickley  
Michael Moore  
Dr. Leland Otte  
Lester Peters  
Larry Phillips  
William Plaehn  
Bryan Schroer  
Thomas Speckhard  
Werner Steinbeck  
Jeffrey Williams

**Donor**

- Scott Bosecker  
William Chael  
David Kerr  
Kevin Wengert

**Delta Chapter \$7,041.00**

**Founders' Society**

- Duane Grummer  
Mark Hofer  
Kent Lage

**Concordia Club**

- Kent Dvorak

- Rudolf Herrmann  
William Jentzen  
Jason Lantz  
Michael Leland  
Steve Vander Sluis

**Wittenberg Club**

- James Covey  
Charles Fisher  
Richard Harrison  
Jerald Johanson  
Seth Kirchner  
Douglas McKechnie  
Brian Meyer  
Greg Michel  
Mark Olson  
Michael Peterson  
Eldo Schornhorst  
Rodney Thompson  
Johann Willers

**Patron**

- Michael Deklotz  
Dennis Licht  
Carl Yoder

**Member**

- DeWayne Ehler  
Terry Fett  
Scott Harvey  
Terry Martinson  
Scott Sump  
Joshua Watt

**Donor**

- Joshua Buyert  
Brian Keys

**Epsilon Chapter \$6,077.63**

**Founders' Society**

- Duane Grummer  
Mark Hofer  
Kent Lage

**Concordia Club**

- Kent Dvorak  
Rudolf Herrmann  
William Jentzen  
Jason Lantz  
Michael Leland  
Steve Vander Sluis

**Wittenberg Club**

- James Covey  
Charles Fisher  
Richard Harrison  
Jerald Johanson  
Seth Kirchner  
Brian Meyer

- Greg Michel  
Douglas McKechnie  
Mark Olson  
Michael Peterson  
Eldo Schornhorst  
Rodney Thompson  
Johann Willers

**Patron**

- Michael Deklotz  
Dennis Licht  
Carl Yoder

**Member**

- DeWayne Ehler  
Terry Fett  
Scott Harvey  
Terry Martinson  
Scott Sump  
Joshua Watt

**Donor**

- Joshua Buyert  
Brian Keys

**Zeta Chapter \$12,755.00**

**Founders' Society**

- Charles Blaser  
Dr. Howard Erickson  
David Haake  
Michael Jackson  
Joel Mueller  
Haven Rolander  
Jeffrey Pierson  
John Skarda

**Concordia Club**

- William Jorns  
Joshua Wolters

**Wittenberg Club**

- Roger Burjes  
Cody Campbell  
Gordon Carlson  
Galen Doud  
Timothy Gerhardt  
David Jackson  
Dr. Richard Kohlschreiber  
Van Larson  
Steven Mein  
Laurence Miller  
Larry Nelson  
Steven Schultz

**Patron**

- Daniel Fischer

**Member**

- Norman Elliott  
Ronald Harrod

- Thomas Henrichs  
William Maskus  
Jerry Meng  
Gary Neuschafer  
Brian Sieker  
John Terrill

**Eta Chapter \$2,995.00**

**Founders' Society**

- Steven Jackson

**Concordia Club**

- Douglas Fleiss  
Arthur Giesler  
Michael Roth

**Wittenberg Club**

- David Goldammer  
Keith Konradi  
Jeremy Murrish  
Al Panhorst  
Peter Sanocki  
Richard Schmelig  
John Spencer  
Omar Stuenkel Jr  
Michael Weidner  
Jason Welker

**Patron**

- Mark Schoedel  
Anthony Series

**Member**

- Nathaniel Leezer  
Ronald Mueller  
Gregory Nichelson  
Jeanne Panhorst

**Donor**

- Wayne Benitz  
Marvin Monday  
David Schlarman

**Theta Chapter**

**Donor**

- Gerald Benedict  
Rev. Robert Paul

**Iota Chapter \$4,095.50**

**Founders' Society**

- Warren Pflantz  
Joseph Potts

**Concordia Club**

- Warren Harms  
Morris Heitman

- Wittenberg Club**  
Lindsey Ferguson  
Roger Flandermeyer  
Robert Finck  
Eric Fogg  
Michael Hanna  
David Heisterberg  
Rev. Paul Hoemann  
Timothy Husby  
Bruce Knoernschild  
Jeffrey Mueller  
Thomas Pfaff  
Roger Plackemeier  
Steven Stadelman  
Brent Toellner

**Patron**

- Timothy Jackson  
Charles Kuntz  
Todd Meyer  
Kim Nelson  
Kenneth Reiter  
Jonathan Riethmeier  
Kevin Tullberg

**Member**

- James Dunkmann  
Mark Harms  
Rodney Mais  
Andrew Meyer  
Arthur McLaughlin  
Donald Paske  
Jonathan Rolf  
Merle Schnelle  
John Wussler

**Donor**

- Phillip Costantinou

**Kappa Chapter \$333.00**

**Wittenberg Club**

- Rudolph Blakeman  
Donavon Hess

**Member**

- Bruce Erickson  
Robert Huber  
Gerald Sietsema

**Mu Chapter \$3,205.00**

**Founders' Society**

- Robert Hillard

**Wittenberg Club**

- Everett Freeberg  
Robert Mattheessen  
John Popp  
Larry Schmidt

- Donald Tate
- Member**  
Kenneth Schaal  
Terry Schuldt

**Donor**

- Roger Heitman

**Nu Chapter**

**Wittenberg Club**

- John Larson

**Xi Chapter \$485.00**

**Wittenberg Club**

- Dale Filsinger  
Kenneth Troester  
Arlyn Uhrmacher

**Member**

- Timothy Vannoy

**Donor**

- Steven Harms  
Mark Larson

**Omicron Chapter**

**Member**

- Dale Pfeiffer

**Pi Chapter**

**Wittenberg Club**

- David Davis  
Donald Mueller

**Member**

- David Lenz

**Rho Chapter**

**Member**

- Jerry De Gier

**Sigma Chapter**

**Donor**

- Eugene Beerbohm

**Upsilon Chapter**

**Wittenberg Club**

- John Gehrke

**Patron**

- Kevin Carriere

**Member**

- Rev. Chad Lueck  
Jere Schultz

**Phi Chapter**

- Wittenberg Club**  
Terrell Miller

**Omega Chapter \$1,830.00**

**Founders' Society**

- Philip Krug  
Cory Baumhardt

**Concordia Club**

- Andrew Rusch

**Member**

- Austin Rader

**Alpha-Alpha Chapter**

**Wittenberg Club**

- Brian Shahan

**Membership Levels:**

Founders' Society: \$500+;  
Concordia Club: \$250 - \$499;  
Wittenberg Club: \$100 - \$249;  
Patron: \$60-\$99;  
Member: \$30-\$59;  
Donor: \$1-\$29.

**Educational Fund Donations Do An Awful Lot of Good**

Donations to the National Educational Foundation (NEF) help the fraternity in two ways. The most important one is it allows chapters to grant scholarships to their members. The second is awarding money to chapters to help pay for repairs and upgrades for projects that meet the educational improvement requirements established by the IRS.

Recently, Zeta Chapter received several thousand dollars for remodeling projects, and, for the first time in just the last couple of years, we have been able to start granting scholarships to qualified members. Thanks to our alumni, who have donated over \$150,000 in just the last 5 years, things are really improving for us.

All of our chapters need this kind of support from their alumni. If you are a donor, thank you and please do not stop. If you are not a donor, please start donating. It is one way we can all help the fraternity.



# Questions And Answers About The National Educational Foundation

**EDITORS NOTE:** The National Educational Foundation is very important to the survival and growth of the National Fraternity. It is for this reason that I reprint every 5 years or so the following questions and answers about the Educational Fund. I think nearly all questions you might have are addressed below. This is one way that all members can contribute to the future of Beta Sig and get a tax deduction while doing it.

## Twenty (Plus) Questions About The Educational Foundation

### 1. What is the Educational Foundation?

The BETA SIGMA PSI EDUCATIONAL FOUNDATION is a non-profit corporation chartered in the State of Illinois for educational, literary, religious, scientific, and charitable purposes.

### 2. Who are members of the Educational Foundation?

You.....all initiated members of Beta Sigma Psi. In addition, any person can become a member with a \$30 annual donation.

### 3. How or from whom did the Educational Foundation receive its first funds?

The Erck Foundation, named in honor of Rev. Henry Erck (1881-1959) preceded the Educational Foundation and provided the first contribution of \$698.26 upon its dissolution in 1983. Rev. Erck's widow gave permission to change the name and status of the Erck Foundation to further advance the causes of Beta Sigma Psi.

### 4. When was the Educational Foundation established?

It was incorporated in March of 1982. The Internal Revenue Service granted temporary tax exempt status in April of 1983 and upgraded that status to a permanent ruling in April of 1985.

### 5. Are gifts to the Educational Foundation deductible for income tax purposes?

Yes, to the extent allowed by law. We are classified as a publicly supported organization as described in section 501(c)7 of the IRS Code

### 6. How does the Educational Foundation obtain funds?

Through tax-deductible gifts from Beta Sigma Psi members, their families, and other friends. Some corporations provide matching gifts for their employees who contribute. Active and alumni chapter members also assist in fundraising activities.

### 7. May I designate how my gift will be used by the Educational Foundation?

Yes, provided it is for an educational purpose consistent with the purposes for which the Foundation was organized and is operated. To endow funds in a permanent chapter or other special program endowment account, a minimum gift of \$200 is required. For more information about available endowed program accounts, please contact the Foundation.

### 8. May I make a provision in my will for a bequest or gift of securities, insurance policy, real estate, or personal property that would help the Beta Sigma Psi Educational Foundation?

Yes. Yes, Yes. And Yes! You can find some suggested wordings to add to your will on the National Website, or contact the Foundation.

### 9. May I designate a contribution to the Educational Foundation as a memorial?

Yes. We ask you to include the following information:

- In memory of
- Name and address of person to be notified
- Your name, address, and chapter
- Endowment designation, if over \$200
- Make checks payable to: Beta Sigma Psi Educational Foundation
- Mail to: Beta Sigma Psi Educational Foundation, 2408 Lebanon Avenue, Beleville, IL 62221.

### 10. Does the Educational Foundation accept gifts honoring persons?

It does! Please give the same information as in (9), except use "In Honor of." The Educational Foundation also welcomes contributions honoring new arrivals..... children, grandchildren.

The Educational Foundation acknowledges contributions honoring birthdays, new associates or initiates. Here too, as with all recognition and memorial gifts, a card is sent.

### 11. Does the Educational Foundation have an asset manager?

The Treasurer of the Foundation works with an investment management company to administer the endowed funds of the organization. Each chapter has monies permanently endowed to perpetuate gifts to that chapter, in addition to other national-level endowments. The Foundation Directors are committed to increasing the funds in each endowment.

### 12. Who administers the Beta Sigma Psi Educational Foundation?

Directors compose the Educational Foundation Board and are elected in staggered three year terms. One advisor serves as a liaison by virtue of his office, namely the Beta Sigma Psi National President. Officers of the Board are elected from within the Board of Directors.

### 13. How many persons are employed by the Educational Foundation?

The Educational Foundation has no full-time employees. The officers and Directors of the organization donate their time. Administrative services are provided by the National Fraternity Office and the Educational Foundation reimburses the Fraternity for the value of those services.

### 14. Does the Beta Sigma Psi Educational Foundation have priority programming?

Yes. The Educational Foundation is committed to helping the undergraduate chapters of Beta Sigma Psi in their endeavors through a variety of educational programming.

### 15. What other programs does the Educational Foundation support?

- scholarships for qualified students
- certain National awards for outstanding performance
- grants for chapter libraries and computer systems
- alumni address files
- support for The Gold Rose
- Beta Sigma Psi Leadership Academy
- Beta sigma Psi Educational Forum
- alumni Seminararian scholarships
- partial funding of the Coordinator of Collegiate Development position

### 16. Where does all the money come from?

From contributions and interest income only. The majority of the donations come as response to the annual Phonathon, which takes place in November each year. We're limited in our accomplishments only by our fundraising.

### 17. Does the Educational Foundation qualify for matching gifts from corporate employers?

Yes, in some cases. If you work for a "matching gift" company, please check with your payroll officer. Many people may be able to have a matching gift sent to the Educational Foundation courtesy of their company. The Fraternity Headquarters will assist with the necessary paperwork.

### 18. What are the future plans of the Educational Foundation?

The immediate plan is to increase the endowments of the Educational Foundation so that the Foundation:

- will be able to underwrite many more educational programs
- can provide larger and more scholarships to students
- can provide financial assistance (loans) to students based on need
- can perpetuate funding for the educational programming of the Fraternity through the future.

### 19. How do I find our more about the Educational Foundation, its purposes, and goals?

Continued on top next page

Continued from previous page

Write and mail to the Beta Sigma Psi Educational Foundation, or visit the National website.

### 20. Does the Educational Foundation create and administer educational programming?

In general, the Foundation does not actually create and administer educational programs.

Most programs, such as the Leadership Academy and Membership Education Forum, are created and administered by the National Fraternity's Board of Directors. The Educational Foundation merely provides funding assistance for the programs. It also administers the National scholarship programs.

### 21. Does the Educational Foundation accept donations by credit card?

Yes, credit card donations can be accepted through Thrivent's Simply Giving program. We can process one-time donations by you simply giving us your credit card number, name on the card, expiration date, and billing address.

### 22. Can I spread out a larger donation over time?

Yes, we can spread donations over as long as five years through Thrivent's Simply Giving program by automatic monthly debits to a credit card or bank account. Contact the Foundation for more information.

### 23. What are the various endowment sub-funds to which I can designate a donation?

Each currently operating Active Chapter has a sub-fund, plus National Scholarships, National Programs, Ethical Leadership Education, Expansion and Recruitment, Kettler Award, and William Welge Scholarship Loans.

Donations must be \$200 or more to be endowed. Also, a donation of \$400 could be split between two sub-funds, \$600 among three sub-funds, etc.

### 24. Does the Educational Foundation participate in the Thrivent Choice programs?

Yes, you can designate your Choice Dollars to the Foundation as you can to any other participating congregation or organization. We have also applied to participate in upcoming Voting Events.

### 25. Does the Educational Foundation have a capital campaign in order to achieve its funding goals?

Yes, the Educational Foundation launched the John Judge Memorial Campaign For Excellence in 2007, with a goal of \$1,000,000.

Achievement of the goal will provide perpetuated full funding of the primary annual National-level educational programs and expenses. To donate to the campaign, please contact the Foundation.

Article excerpted and updated by Kirk Meyer (Alpha '91) from a previous Gold Rose.

## Charitable Giving Statistics - Continued

Continued from page 23

- Approximately 91% of high net worth households give to charity.
- On average, high net worth donors gave \$25,509 to charity in 2015. By comparison, general population households gave \$2,520 on average

### Charitable Giving Demographics

#### What age group donates the most to charities?

- Millennials are 25.9% of US population.
- 40% of Millennial donors are enrolled in a monthly giving program.
- 26% gave tribute gifts.
- 46% donate to crowdfunding campaigns.
- 15% gave on #GivingTuesday 2017.
- 16% give through Facebook fundraising tools.
- 64% volunteer locally, 9% internationally.
- 55% attend fundraising events.
- 11% of total US giving comes from Millennials
- 84% of Millennials give to charity, donating an annual average of \$481 across 3.3 organizations.

#### Millennials:

- Millennials are active on their phones and respond best to text message and social media, but rarely check personal email or respond to voice calls.
- Millennials are most likely to contribute to work sponsored initiatives, donate via mobile and watch online videos before making a gift.
- 47% of Millennials gave through an organization's website in 2016.

#### Gen Xers

- are 20.4% of US population
- 49% of Gen X donors are enrolled in a monthly giving program.
- 31% give tribute gifts.
- 45% donate to crowdfunding campaigns.
- 14% gave on #GivingTuesday 2017.
- 19% give through Facebook fundraising tools.
- 64% volunteer locally, 8% internationally.
- 56% attend fundraising events.
- Gen Xers are most likely to fundraise on behalf of a cause, make a pledge, and volunteer their time to an organization.
- Gen X prefers text messages or voice calls. These donors regularly check email and stay up to date on social media feeds.
- Email prompted 31% of online donations made by Gen Xers
- 9% of Gen Xers are inspired to donate to charity by a message/image they saw on social media.

#### Baby Boomers

- represent 23.6% of the US populations.
- 49% of Baby Boomer donors are enrolled in a monthly giving program.
- 41% give tribute gifts.
- 35% donate to crowdfunding campaigns.
- 15% gave on #GivingTuesday 2017.
- 21% give through Facebook fundraising tools.
- 71% volunteer locally, 9% internationally.
- 58% attend fundraising events.
- 24% of Boomers say they were promoted to give an online donation because of direct mail they

received.

- 72% of Boomers give to charity, donating an annual average of \$1,212 across 4.5 organizations.
- Boomers answer voice calls, check email regularly, and also use text messaging and social media.
- Though initially slow to adopt new technology, they take to it quickly once they do.
- Boomers are most likely to make recurring donations on a monthly, quarterly or yearly basis.

### Greatest Gen

- is 11.8% of the US population.
- 30% of donors aged 75+ say they have given on line in the last 12 months and on average give 25% more frequently than younger generations.
- 88% of the Greatest gen gives to charity, donating an annual average of \$1,367 across 6.2 organizations.
- They represent 26% of total US giving
- Greatest prefer voice calls and direct mail.
- These donors are late adopters of email and do not typically use text messaging or social media.
- Greatest are most likely to give through direct mail campaigns and donate physical goods.

### Direct Mailing Statistics

- The volume of direct mail went down to 149.4 billion in 2016, but direct mail as a percentage of all mail went up.
- Direct mail response rates in 2016 were 5.3% for house file and 2.9% for prospect lists.
- At 6.6%, oversized envelopes have the greatest household response rates over other mediums (followed by postcards at 5.7% and letter-sized envelopes at 4.3%).
- At 37%, oversized envelopes have the greatest household return on investment over other mediums (followed by postcards and letter-sized envelopes at 29%).
- The top response rate tracking methods are online tracking such as PURLs (61%), call center or telephone (53%), and code or coupon (42%).
- For every \$167 spent of direct mail in the US, marketers sell \$2095 in goods.
- Adding a person's name and full color in the direct mail can increase response by 135%.
- Adding a person's name, full color and more sophisticated database information can increase the response rate by up to 500% vs not doing any of these things.
- Targeting customers on a 1:1 level increases response rates up to 50% or more.
- 40% of a direct marketing campaign's success is in the data.
- 73% of firms aspire to be data-driven but only 29% of firms succeed at turning data into action.

### General Charitable Giving Statistics

- 30% of annual giving occurs in December.
- 10% of annual giving occurs on the last 3 days of the year.
- 77% believe everyone can make a difference by supporting causes.
- 4.5 is the average number of charities each person supports.
- 64% of donations are made by women. 69% of the population gives.

### Charitable Giving Demographics

(Continued on page 33)



University Of Nebraska, Lincoln, NE  
**DELTA CHAPTER did not submit their report so they are not represented.**

## Digital Verses The Printed Gold Rose

By: Gary Raffety

**Beta** Sigma Psi is currently faced with increasing costs, especially for our liability insurance, which continues to increase significantly. As the Editor of the Gold Rose, I am responsible for one of the largest expenditures in the national budget each year, publishing costs, which were about \$35,000 this past year and are an annual expense that I felt could be and should be reduced.

I like to think that I have worked hard to get the best prices for our printing and believe that I have succeeded in keeping our printing costs as low as possible. Still, even with very competitive prices for our printing jobs, our budget was being stretched to the limit, so I decided to look for a way to reduce the annual publishing costs.

It was clearly obvious that the only place to make a substantial reduction was with the Gold Rose. So, I thought of ways to create a savings and came up with the sign-up mailings which we have just completed. After discussing my idea with other board members, it was unanimously agreed that I should implement the plan.

### The Plan:

We currently have 6,030 alums on our Gold Rose magazine mailing list. With a cost of approx. \$3.50 per copy of the Gold Rose (printing and postage), we are looking at an annual expenditure of \$21,000 plus, just to print and mail the magazine to our alumni.

We also currently print over a thousand copies that are distributed to Lutheran congregations, Lutheran High Schools, Synod offices, and friends of the fraternity, that reside within the 8-state area where we have chapters and colonies.

The easiest and most obvious way to cut costs is to reduce the number of magazines printed and mailed and the quickest and easiest the way to do that is to have as many of our brothers sign up for a digital copy as possible. Thus, the card sign-up plan was instituted. Those that returned a card are kept on the mailing list, those who did not, are removed from the mailing list and automatically placed on the digital delivery list.

After producing and delivering the MAC Chapter Newsletters for 12 years, the Gold Rose since 2010, plus administering the MAC Capital Fund Drive for the past 5 years, I learned that there are a significant number of brothers who lose their affection for BSP after they leave school, for whatever reason.

Some contacted me over the years to ask me to remove their name from the mailing list. In addition to those that contacted me on their own, I assumed that there are many more with like feelings about the fraternity who did not bother to tell us to remove their names from the mailing list. Thus, in reality, we were printing and delivering printed materials every year to disinterested members who did not want to receive them, at a significant cost to our organization.

So, the card sign-up plan was created and implemented as a means of removing those who did not wish to receive the printed Gold Rose and at the same time, to have those willing to help us save money, sign up for the digital Gold Rose by default.

After discussions with the Leaders of the Board, all agreed to allow me to implement

my card mailing program, which requires our alums to sign up for the printed copies. Currently, 10.8% of our membership that is on the mailing list has signed up for the printed version.

### Potential Problem - Do You Have A Current Email on File?

One problem does exist that I, as the Publishing Director can identify, but not correct, without the help of our members, is the lack of a workable email addresses for far too many brothers. Without a working email address in the data base, we are not going to be able to notify you when the Gold Rose is available to view at the national website. In addition to the current issue, many past issues will also be accessible.

Out of our current 6,030 members on the mailing list, only 2,683 have an email address in the master file at the national office. That is only 45% of the total, not good. To make matters worse, many of those 2,683 emails are most likely not current and therefore worthless. Also, of the 664 who returned cards to sign up for printed copies of the Gold Rose, 128 did not bother to send us an email address and for many more, **the handwriting was very hard to read and so may have been typed inaccurately, thus another non-working email in the file.**

A few of those that did not send an email may have emails already in the master file, but even so, many of those are probably old and out of date, therefore, many additional brothers are at risk of not hearing from us when it is time to be notified about the availability of the latest issue of the Gold Rose

So, that being the case, **it is very important that each member reading this article go to the Beta Sig website and update his personal profile data. To do that – go to: [www.betasigmapsi.org/account](http://www.betasigmapsi.org/account) where you can type in your personal address, phone numbers, email address and etc.** Without this, many of you will not be hearing from us again, except for letters from the Educational Foundation for fund their drives.

### What If I Did Not Sign Up

If you did not return either of the two cards, you will be removed from the mailing list and moved to a new digital email list that I am creating. What this means is, you will receive an email notice (**if we have a working email for you**) with a link to the current Gold Rose on the national website. All you have to do is click on the link and it will take you directly to the webpage where the gold rose is. The email with the link to the Gold Rose

Continued top next page

## Digital Verses The Printed Gold Rose

Continued from bottom previous page

will be sent to you at the same time that the print proof is sent to the printer. So, you will actually be receiving your issue a week or two earlier than the brothers receiving the printed version.

### Can I Sign Up Later If I Change My Mind?

If you did not receive either of the two cards that were mailed out, or if you did but decided not to return one, then you will not be on the mailing list and will not receive a copy of the printed Gold Rose. However, we will still let you sign up should you now, or sometime later change your mind. Just contact me – Gary Raffety, the Editor at -

[GoldRoseEditor@kc.rr.com](mailto:GoldRoseEditor@kc.rr.com)

tell me you want to receive the printed copy of the Gold Rose and we will return your name to the mailing list.

### What Will the Savings Be Used For?

One of my goals as Director of Publications, is to expose more Lutherans to the existence of Beta Sigma Psi. Also, to present a true image of what we are and what we stand for, as opposed to the exaggerated and inaccurate images that are produced and distributed by today's media and Hollywood.

I have learned over the past decades that far too many Lutherans have absolutely no knowledge of us. The majority of the few who have heard of us do not really know that much about us and are more apt to think of us as just another out of control fraternity like they hear about in the news, rather than the real deal that we are.

I have contacted dozens of Lutheran High School Administrators, Principals and Counselors in recent years and in over 95% of the cases, when asked, said that they had never heard of us. It is quite obvious to me that we must make a serious effort to reach more Lutherans if we are to continue to exist.

So, part of the savings will be used to increase the number of Gold Rose magazines to be delivered to Lutheran Congregations, Colleges, High Schools, and Synod offices.

Initially, this expanded list will contain just a few hundred new addresses, but hopefully it will be expanded each year to include a few more contacts that will help us grow support for Beta Sig.

Over 90% of the initial savings will be returned to the national treasury to be used for other things. I hope that this article will help explain what this change in Gold Rose delivery is all about and also helps to clear up any confusion that might exist.

## National / Chapter Leader Dies after Illness

BY: Gary Raffety - Editor

**Former** National Fraternity Treasurer and Zeta Chapter Tax Consultant Lowell Gordon, passed away on July 30, 2019 after a long illness.



Lowell was the National Fraternity Treasurer for 5 years and during his tenure, made major revisions and improvements to the way Beta Sig does business. He also negotiated a much-improved insurance policy for the National Fraternity which increased our coverage for the same cost.

Lowell pledged Zeta Chapter in the fall of 1961 and went active in January 1962. He majored in Business and Accounting and became a member of the Accounting Honorary Society. After graduation from KSU, Lowell attended law school at Washburn Law School in Topeka. He graduated in 1968 and moved to Kansas City where he went to work for the National Accounting Firm of Arthur Anderson & Co.



After working for 2 major accounting firms in KC for 4 -5 years, Lowell responded to a newspaper advertisement for an accountant in Breckenridge, Colorado. He was hired and within a couple of years, became the Senior member of

the firm, after the two founding partners that had hired him, moved out of Colorado to new pastures. That was the Beginning of Gordon, Hughes and Banks accounting firm, which would eventually grow into the second largest privately owned accounting firm in the state of Colorado.

Lowell lived in Breckenridge for 6 or 7 years and then moved to Grand Junction to establish a new office there. In the late 80's, he would move again to Golden Colorado (suburb of Denver) and established a new office there.

Lowell loved sports but what few people knew was that he was an avid baseball fan and history buff. He liked to go to Omaha for the college World Series when he could and did many times. As luck would have it, the Junior College World Series is held each year in Grand Junction just 2 blocks from the Gordon, Hughes and Banks office building, so Lowell kept his schedule open for the tournament and spent hours upon hours

Midland University, Fremont, NE

**ALPHA - ALPHA CHAPTER did not submit their report so they are not represented.**

in the stands watching as many games as possible.

Lowell was a Civil War buff and had dozens of books in his personal library that he had read and studied. He could talk extensively about General George Washington Gordon (October 5, 1836 – August 9, 1911) who was a general in the Confederate States Army during the American Civil War. After the war, he practiced law in Pulaski, Tennessee, where the Ku Klux Klan was formed. Lowell said his sister traced their family history back the General and proved that they were related.

Lowell was a devoted family man as well. He met his wife Sandy at a party in Manhattan that I took him to, we went to see some of my old friends. Sandy was divorced and was there



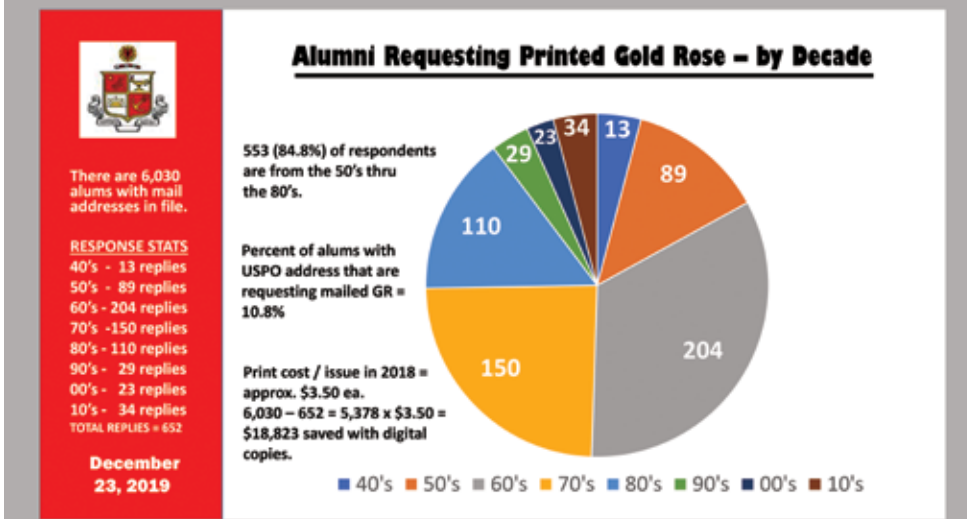
with her sister who was one of my friends at the party. I introduced Sandy to Lowell and since we all lived in Kansas City, the two started dating and soon were married. Lowell and Sandy have 3 children, David, the oldest who is in business in Grand Junction, and two daughters who both live in Golden with their families. Sasha, a licensed CPA and Meeka, who works in a bakery, are both married and have children of their own.



Lowell stood up with me at my wedding as my Best Man in 1972 in Kansas City and shortly there after moved to Colorado. As a result, we didn't see very much of each other

after his move, because we were both busy with our careers.

I sometimes wish he had stayed in KC so we could have maintained our close friendship but it was not to be. Lowell was a first-class individual, great husband and father to his family, and a loyal and lifelong friend. He was also a devoted lifelong Beta Sig. Good bye my friend, I shall continue to miss you for the rest of my life.





**Col. Carl Karst '51 – Arlington Cemetery**  
Vietnam Vet / Pilot – Zeta Founding Member

EDITORS NOTE: I have been wanting to include this story for a long time. Col. Karst was a founding member of Zeta Chapter who gave his life for America and for us. We must never forget a Brother that loses his life so we can live in a free country where we are the envy of the world.

**Col. Carl Karst - Arlington Cemetery**

The symbol on the Wall next to Carl's name was changed from a cross (MIA) to a star (MA) April 30, 1994. Remains were identified.



Name: **Carl Frederick Karst** Rank/Branch: Colonel USAF Unit: Pleiku, South Vietnam Date of Birth: 27 October 1930 Home City of Record: Galatia Kansas Loss Date: 16 November 1968 Country of Loss: South Vietnam Status (in 1973) Missing In Action kcfv/Vehicle/Grot uld: 01Fether Personnel In Incident: Captain Nguyen X. Quy (VNAF missing) Carl Karst:

On November 16, 1968, (then) Major Carl F. Karst, pilot, and Captain Nguyen X. Quy, VNAF observer, departed Pleiku in an O1F on a visual reconnaissance mission over South Vietnam. At 1640 hours (4:40 p.m.), shortly after takeoff, Karst reported that his position was two nautical miles east of Plei-ku, and that he was proceeding with his mission. When subsequent attempts to raise Karst by radio failed, a search began. The search continued for three days without success. Karst was classified Missing in Action.



Cessna O-1 Bird Dog L-19 Reconnaissance Plane

A few months later, a Vietnamese informer reported information given him by a NVA/VC propaganda team that Karst's aircraft was shot down by small arms fire and the Vietnamese observer

was killed. The informer stated that Karst evaded to the south, but was captured and executed in a village in northern Phu Bon Province. The informant did not witness any of these events.



The report was considered inaccurate because the NVA/VC team was known for coloring stories to impress the local population, and because Karst was very knowledgeable of the location of Viet Cong and North Vietnamese units in the area. Those who knew Karst agreed that he would not have evaded to the south, but rather to the west where he knew he might reach friendly forces and safety.

In December 1983, a refugee turned over two bone fragments and a rubbing of a metal ID tag bearing Karst's name to U.S. officials in Malaysia. He stated that he had been given the remains and rubbing by a Buddhist monk in 1981. The refugee was told that the remains were among 7 American remains recovered at an unspecified location in the Central Highlands.

By 1984, U.S. officials had received a series of reports from eight separate sources reported information concerning the alleged remains and dog tags of Karst. Four provided information solely on Karst, while the other four sources related Karst's name to other Army personnel who had returned from Vietnam at the end of their tours.

From a contemporary news report: Sunday, October 3, 1993 Twenty-five years after he disappeared in a plane crash in South Vietnam, Air Force Colonel Carl Karst was buried at Arlington National Cemetery.

Vietnamese officials turned over Col. Karst's remains in 1989, but they were not identified until last month by the Army's Central Identification Laboratory in Hawaii. Colonel Karst was 38 when he was shot down while flying a Cessna O-1 "Bird Dog" reconnaissance plane on a mission November 16, 1968. He was buried Friday with full honors and an Air Force flyover. He is survived by his wife, two sons and a daughter

**October 2, 1993 - Arlington, Virginia**

With great dignity and poignancy, the nation paid its last respects Friday to Colonel Carl Karst, a moment delayed and denied for 25 years. Karst, an Air Force colonel and a native of Barton County, Kansas, died in a plane crash in Vietnam in 1968. But two decades passed until his remains were returned to this country, were positively identified, and a burial was arranged.

On a golden autumn morning Friday at Arlington National Cemetery, the moment for that last salute finally arrived. Karst's wife and their three children now adults with children of their own watched as Karst's flag-draped casket was solemnly carried by horse-drawn caisson to be buried on American soil. Four US Air Force F-16 jets roared overhead in the Missing Man formation.

"Everyone, I think, was moved by the military ceremony, the flyover, the band; all of it together was just such a solemn and dignified way of bringing closure to a time that has been full of all kinds of emotions," said Ruth Nelson, Karst's widow who has since remarried. Accompanying Karst's immediate family were relatives from throughout Kansas.

Family friends, Old Air Force buddies, Newer friends from MIA groups, and an old neighbor from long ago, Bob Dole from nearby Russell, now a U.S. Senator. If the burial resurrected some pain, the greater feelings seemed to be those of gratitude. Finality. And peace.

"I know every family member feels very good about it," Dole said after the grave-side service. To honor its fallen comrade, the Air Force proffered the special majesty and sounds of a full military burial at Arlington National Cemetery. The clip-clop of hooves from the team of horses. The hollow cadence of drums. The mournful strains of the Air Force Hymn.

The crack of a 21-gun salute. The lonely call of "Taps." And then, silence, as the American flag was removed from the casket, folded crisply into a triangle and presented to the family. Military funerals have not greatly changed in the past 25 years, but feelings about Vietnam have.

When Karst died 25 years ago, this country was bitterly divided about the costs and value of that war. And if some division remains, there is little dispute about the honor due the men and women who served their country in Vietnam, and for those who did not return.

"Regardless of the validity of the Vietnam War and we knew there was controversy, the men who served in the war did so with honor and dedication," Nelson said.

Karst's dedication is reflected in his military honors, including the Distinguished Flying Cross, the Bronze Star and the Purple Heart. He was a 14-year Air Force veteran when his reconnaissance plane was shot down in 1968. He was officially listed as missing in action until 1974, when military authorities changed his legal status to killed in action. His body was returned by Vietnam in 1989, and a positive identification made this year.

**NEF Donations At Work**

Continued from page 22

tournament many alumni gathered at St. James Public House for food and socializing late into the evening.

A light breakfast was held at the Chapter house Saturday morning. Alumni met for the annual Homecoming meeting of the Rolla Alumni Chapter while wives and guests enjoyed a wine and food pairing hosted by Ms. Sierra Signaigo and the St. James Winery in the dining room. Lunch followed the pairing and was prepared by the Chapter's chef. After lunch, alumni competed in a washer's tournament and an alumnus versus active kickball game. Other alumni opted to attend guided tours of the campus, led by Chapter members with complementary shuttle service to campus.

Saturday afternoon, everyone gathered for a group picture in their finest attire. The dedication ceremony followed with a formal dinner, dancing, and a live band in tow. Tony Avena '76 was the winner of the Blues ticket raffle. The raffle raised over \$1,500 from Blues tickets generously donated by John Komlos '82.

On Sunday, the Chapter and many alumni and family attended Immanuel Lutheran Church for Beta Sig Sunday. The occasion was commemorated with ornaments for all donors who contributed to the campaign. To get your ornament you may email [etaalumni@betasigmapsi.org](mailto:etaalumni@betasigmapsi.org) and arrange for shipping.



Homecoming 2019 - Rededication of Eta Chapter House



- Dedication Ceremony

Rusty Goldammer '74 recognizes Nathan Leezer '10 with a plaque



Ray Erhard '74 celebrates his IM volleyball victories

Photo - Far Left: Ray Erhard '74 celebrates his IM volleyball victories

Photo - At Left: Kevin '17 and Paul '09, sons of Ed Schmidt † '79.

**DEDICATION HIGHLIGHTS**

During the dedication, Nathan Leezer '10, Rolla Alumni President, thanked God first for the blessings bestowed on the organization and the success of the project. Chapter officers were recognized for their contributions and for recruiting the 19 new members this fall. Many alumni who gave generously of their personal time for the success of the project were personally thanked. Alumni Ken Harms '65, Gerry Wiegmann '71, Rusty Goldammer '74, Art Giesler '73, Stan Fowler '10, Mike Krueger '73, Robert Givens '08, John Heibredner '74 and project intern Dylan Falter '17 received embroidered jackets as tokens of appreciation from the organization and alumni. Wives Karen Harms, Candy Heibredner, and Savannah Leezer received recognition gifts for their unwavering support.

Nathan Leezer '10 spoke to the audience on the milestones of the project, commenting on the miracle pace at which construction took place transforming the building in 16 months with only volunteers coordinating construction efforts, equivalent to building or renovating a 1,500-sf. home every month. Nathan expanded on the growth of his faith through the project. John Heibredner '74 shared his reflections on the project and the blessings it has brought. John challenged the young men to make the most of their short time in the fraternity in the hopes that their experiences better prepare them to be strong leaders for their family, community, and country. Gerry Weigmann '71 and Rusty Goldammer '74 recognized John Heibredner '74 and Nathan Leezer '10 with plaques commemorating their leadership efforts. The Dedication was closed with a prayer and dinner blessing from Rev. Stephen Kamprath accompanied by a set of double rainbows in the sky over the backyard.



AT Right: pledge class of 74 attendees; Jim Sutton, Rusty Goldammer, Mark Roenfeldt, and Steve Rinne.

At left: Gerry Wiegmann '71, recognizes John Heibredner '74 with a plaque



# Ericksons Establish the Larry E. and Laurel Erickson Chemical Engineering Enrichment Fund

Provided By: Kansas State University Alumni Magazine

Since his first semester at Kansas State University in 1957, Larry Erickson has been a student, research fellow and instructor ... often all at once. After more than 60 years of study and discovery, he still keeps consistent office hours throughout the week and is an active researcher in the Tim Taylor Department of Chemical Engineering. Because of Larry's prolific academic and professional commitment, he understands how students and faculty must be resourceful and collaborative to make best use of funding and to advance knowledge.



Dr. Larry Erickson and wife Laurel Erickson

"I've had many good experiences during that time," said Larry, emeritus professor of chemical engineering. "I have always appreciated the quality of education and scholarships I received."

As a way of showing that appreciation, he and his wife, Laurel, established the Larry E. and Laurel Erickson Chemical Engineering Enrichment Fund in support of departmental professional travel to meetings, conferences and workshops, seminars and visiting lecturers.

"Larry and Laurel's gift supports student travel, faculty travel and training, emergency equipment repairs and safety improvements," said Jim Edgar, Department of Chemical Engineering head and university distinguished professor. "For Larry to have such confidence in our department and our work is a boost in every way."

The Ericksons established a charitable remainder unitrust or CRUT to contribute to an enrichment fund for the chemical engineering department. The CRUT provides the Ericksons a charitable tax deduction while paying a specific percentage of the trust's assets each year to them. When the trust terminates, the remaining principal will be made available to the chemical engineering department.

Aside from creating the enrichment fund, Larry and Laurel have contributed to the university since 1975 in support of many colleges, K-State Libraries, Global Campus, K-State Athletics and toward a graduate student fellowship fund established by a donor with Erickson's name attached to it.

"When we invest in students, we do not know their future contributions to society," Larry said. "Graduate students at K-State have gone on to become university faculty, as well as leaders in government and industry."

K-State researchers benefiting from Larry and Laurel's gift are working to improve energy efficiency of organic matter used as fuel. They are also working on issues related to health care, national security and improving crop yields.

"The Erickson fellowship embodies Larry and Laurel Erickson's commitment to education and support of next-generation engineering researchers," said Bin Liu, assistant professor of chemical engineering. "With this support, graduate students in my group are able to pursue innovative research."

Larry Erickson has also donated his professional time at K-State since taking on emeritus professor status in 2015. "Financial support for our educational program has been impacted by reductions in state funding. My motivations for continuing to serve without compensation include the opportunity to work with students and to contribute to the challenges society faces," he said. "I believe the impact of my time has been as meaningful as our financial gifts."

# Nicaragua Amigos For Christ

The relationship between Beta Sigma Psi and Amigos for Christ goes back many years. We were lucky to be able to go this year as opposed to last year where it was deemed unsafe in Nicaragua for travelers to visit.

Three men from Eta Chapter along with John Hatfield, Beta Sig's National Advisor, made the trip at the beginning of the summer. While there we learned that since no Gringos (American friends) were able to come down, the other communities that already had their clean water, bathrooms, and schools had decided to bus themselves to the other communities that had not been helped yet.



Eta Members In Nicaragua:

(L-R): Cameron Ziegler '16, Sam Fayad '14, and Dylan Falter '16

There, they did what had been done for them: they helped run clean water, build bathrooms, and also build schools for their Nicaraguan brothers and sisters.

While in Nicaragua we learned how to do all of those things, but more importantly we learned what Amigos for Christ was really there to do: "To serve that Christ becomes more visible." That is Amigo's Mission Statement, and I believe that is also fitting as fraternity men in Beta Sigma Psi.

Dylan Falter, one of the Actives from Eta Chapter said, "Sometimes we lose track of what is really important, and this mission trip allowed us to put everything else aside and realize we are all on the same team, and all people deserve quality basic necessities."

This trip allowed us to help some distant neighbors in need through some hard work, and also allowed us to see that we are all fundamentally the same in our devotion to Christ."

## Charitable Giving Statistics - Continued

Continued from page 27

1. What age group donates the most to charities?
2. Millennials are 25.9% of US population.
3. 40% of Millennial donors are enrolled in a monthly giving program.
4. 26% gave tribute gifts.
5. 46% donate to crowdfunding campaigns.
6. 15% gave on #GivingTuesday 2017.
7. 16% give through Facebook fundraising tools.
8. 64% volunteer locally, 9% internationally.
9. 55% attend fundraising events.
10. 11% of total US giving comes from Millennials
11. 84% of Millennials give to charity, donating an annual average of \$481 across 3.3 organizations.
12. Millennials are active on their phones and respond best to text message and social media, but rarely check personal email or respond to voice calls.
13. Millennials are most likely to contribute to work sponsored initiatives, donate via mobile and watch online videos before making a gift.
14. 47% of Millennials gave through an organization's website in 2016.

## General Email Marketing Statistics

1. 13% of emails are opened and read within five minutes.
2. 17% of people who send their support from email are doing so on a mobile device.
3. The open rate for nonprofit emails specifically is between 15% and 18% on average.
4. Emails with social sharing options increase click-through rates by 158%.

## Online Charitable Giving

1. Online giving has seen consistent year over yeagrowth:
2. 2012: \$19.2 billion
3. 2013: \$21.2 billion
4. 2014: \$24.1 billion
5. 2015: \$25.8 billion
6. 2016: \$27.8 billion
7. 2017: \$31 billion
8. 54% of donors worldwide prefer to give online with a credit or debit card.
9. 11% prefer direct mail.
10. 11% prefer cash.
11. 10% prefer bank/wire transfer.
12. 9% prefer Paypal.
13. 4% prefer mobile app/wallet.
14. 1% prefer text message.
15. \$128 dollars is the average online donation amount.
16. \$326 dollars is the average annual donation total for recurring donors.
17. 67% of nonprofits across the globe are set up to accept online donations.
18. On December 31st, online giving is concentrated between 12 PM and 7 PM.
19. On December 31st, online giving is concentrated between 12PM - 7PM.
20. Custom-branded donation pages nested inside a nonprofit's website raise 6X more money.

## Online Fundraising Statistics

1. Overall online revenue increased by 23% in 2017, accelerating from 15% growth the previous year.
2. Every sector tracked saw at least 15% online revenue growth, with particularly large gains for Environmental (34%) and Rights (37%) nonprofits.

3. Nonprofits received an average of 28% more online gifts in 2017 than 2016.
4. On average, 38% of donors who made an online gift to a nonprofit in 2016 made an online gift again to that nonprofit in 2017.
5. Retention was 25% for donors who made their irst gift in 2016, and 60% for repeat donors (who gave at least one gift before 2016, and again in 2016).
6. Revenue from one-time gifts increased by 19% in 2017.
7. Remarketing on Facebook, Google AdSense, Twitter, or LinkedIn can increase traffic to your donation pages.
8. In one case study, a nonprofit used Custom Face book Audiences to drive 63% more online donations.
9. Revenue from monthly giving grew 23% compared to 13% growth for one-time giving.
10. Pre-selecting monthly giving on your donation page can increase conversions of monthly donations by up to 35%.
11. Email messaging accounted for 26% of all online revenue.
12. Live Chat Support increase audience engagement rates to drive 45% more opt-in conversions.
13. For every 1,000 fundraising messages sent, non profits raised \$42.
14. There were noticeable differences in this metric by nonprofits' size. Small nonprofits (under 100,000 email subscribers) received \$71 per 1,000 fundraising emails sent; Medium nonprofits (100,000-500,000 email subscribers) received \$36; and Large nonprofits (over 500,000 subscribers) received \$32.

## Monthly Giving Statistics

1. 45% of donors enrolled in a monthly giving program.
2. The average monthly online donation is \$52 (\$624 per year) compared to the average one-time gift of \$128.
3. Monthly giving revenue increased by 40% in 2017.
4. Monthly giving accounted for 14% of all online revenue in 2016, and 16% of online revenue in 2017.
5. Donors that set up recurring donations give 42% more annually, compared to one-time donations.
6. 52% of Millennials are more likely to give monthly over a large one-time donation.

## General Social Giving Statistics

1. 55% of people who engage with nonprofits on social media end up taking some sort of action.

2. 59% of those people donate money.
3. 53% volunteer.
4. 52% donate clothing, food, or other personal items.
5. 43% attend or participate in charitable events in their community because of social media.
6. 40% subsequently purchase a product that benefits that charity.
7. 25% contact their political representatives either by phone, letter, or email after engaging with a cause on social media.
8. 15% organize their own events in their community afterward.
9. For every 1,000 email subscribers, nonprofits have an average of 199 Facebook followers, 110 Twitter followers, and 13 mobile subscribers.
11. Nonprofits have claimed Facebook as the most important social media for their causes, with Twitter in a close second place, and YouTube in third place.
12. Nonprofits share a daily average of 1.2 updates on Facebook and 5.3 Tweets.
13. 46.1% of churches say that using social media is their most effective method of outreach.

## YouTube For Nonprofits

1. In an average month, 8 out of 10, 18-49 year-olds watch YouTube.
2. Among millennials, YouTube accounts for 2/3rds of the premium online video watched across devices
3. More than half of YouTube views come from mobile devices
4. The average mobile viewing session lasts more than 40 minutes
5. The most viewed brand videos are on average 31-60 seconds long (32% of all views)
6. In 2015, 18-49 year-olds spent 4% less time watching TV while time on YouTube went up 74%
7. 28% of nonprofits are on Youtube.
8. 6 billion nonprofit videos viewed in 2016.
9. 57% of people who watch nonprofit videos go on to make a donation.
10. 68% of nonprofit video watchers view similar videos within 30 days.

**Editors Note:** All Chapters, as well as the National Fraternity, depend on donations for their survival. Finding the best methods for achieving success is a game changer and thus my reason for including these facts in the Gold Rose. As a fraternity, it appears, talking to other fraternities leaders, that we have more success then most, but we can always do better.





### 75 Years As A Beta Sig

Continued from page 7

I was one of the four Incorporators of the Educational Foundation, as well as the Beta Sigma Psi Foundation (Housing). I served for a number of years as Chairman of the Housing Foundation and still serve on its Board of Directors. I was awarded the Linemann Award at our 50th National Convention in St. Louis in 1975. That was the most memorable experience in my Fraternity career.

#### Expansion of the Fraternity

John Hingst and I set out to expand the National Fraternity from the six active chapters in 1960 to a goal of at least 10 chapters, which would provide us with senior membership in IFC.

Besides having employment where we could take the time from our jobs to travel, we were both pilots. John had the plane, a Piper Apache. Our first target was Michigan Tech University, in the Upper Portion of Michigan. I remember well one very foggy day in the Fall when John was at the controls and I was appointed to be a spotter for TV towers. We were flying at an altitude of only 2,000 feet, so towers were an obstacle!

The history of these expansion efforts is well documented in the current Associate Membership Manual. At one time, we had a total of 17 Active Chapters with over 500 members. During our existence as a fraternity, we have been on a total of 24 different campuses.

Several of the reasons why we now have a total of 10 chapters and two colonies is:

1. We colonized at schools with very weak Greek Systems (Western Michigan, Central Mo)
2. Many of our colonies did not have enough Lutherans enrolled to support a viable chapter.
3. We didn't have enough time to organize a strong and supportive Alumni Chapter
4. Social Changes began to be more prevalent on the campuses, like Vietnam War protests and the burning down of ROTC buildings.

Needless to say, we have over the years learned from our expansion mistakes and incorporated these into our current Expansion Manual.

During our hey-day of Active Chapters, we used to have Annual Conventions in St. Louis in April. The attendance at most were over 300 young undergrads, and they possibly were

attracted because we sponsored a dance on Friday night with girls from Lindenwood College in St. Charles, where I was on the Board. Good times and well chaperoned.

#### Growth of the Brotherhood

The National Officers realized early on that Beta Sigma Psi could never be the size of older and

larger National Fraternities. So, we set out to make each of our Chapters the best on its respective campuses. That is still our number one goal.

Other fraternities tout the number of leaders they have within their alumni. It might be interesting to know that, as a percentage, our fraternity has furnished more leaders to industry, church, and the political arena. The contributions annually to the Educational Foundation as a percentage is higher for example, than a comparison with Beta Theta Pi fraternity.

We have more "How To" manuals than most other National Fraternities. And thanks to the guidance and direction of Gary Raffety, our Publications Director, the quality is many times that found with most National Fraternities.

#### Looking Forward

The following is addressed to both Alumni and Active members...

*How many Active and Alumni Chapters go on a retreat to develop annual and 5-year Strategic Plans, and then review those plans as time passes, to see where you are and where you are headed. Below are things that our members need to be aware of and to address in a positive way.*

*We say we are Men of Honor. The Code of Conduct must be read at the beginning of each semester. How many are doing this?*

*We are living in an era where all fraternities and sororities are being punished and placed in limbo for the bad actions of a few individuals on campus: - see Ohio State, Penn State, San Diego State, and others. How are we living as Men of Honor?*

*If any Active Chapter members, individually or collectively, engage in any form of hazing to "build brotherhood" than they do a disservice to all of the brothers and should be escorted to the front door!*

*College costs increase every year. Is your Alumni Chapter meeting these demands by establishing and funding scholarships for those who deserve a scholarship?*

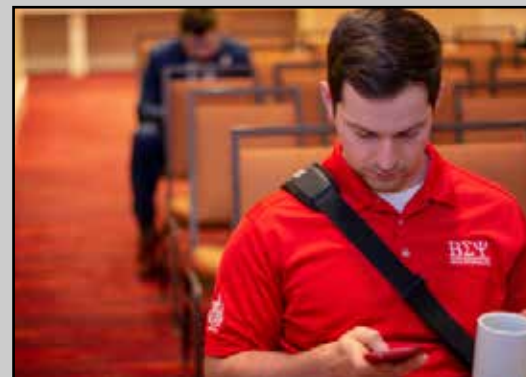
*Grades and graduation are very important to every chapter of Beta Sig. What kind of mentoring program, test follow-up for every member (not just Associate Members) and other forms to develop study habits are you providing?*

Finally, what are you doing to make your chapter stand out as a worthy member of the campus community?

I have often said that three organizations helped to shape me and provide the education and leadership that I have experienced. They are the Boy Scouts, US Jaycees, and Beta Sigma Psi. The Fraternity has been my richest experience because I have grown with the organization and helped shape policy in the past and into the future.

Per Asper Ad Astra'

## Photos from MEF



## 2019 MEF Work Session Photos from Louisville, Kentucky

Beta Sigs spend all day Saturday in a series of classes that help them grow as leaders in the fraternity. MEF is not only an opportunity to learn but also an excellent time to meet leaders from the other Beta Sig Chapters. Sign up Today.

(See top pg. 22 about registration).





Beta Sigma Psi Fraternity  
2408 Lebanon Avenue  
Belleville, Illinois 62221

NON-PROFIT  
BUS POSTAGE PAID

CHANGE SERVICE REQUESTED



## Beta Sigma Psi National Fraternity Chapter Houses



Urbana, Illinois



Columbia, Missouri



Bloomington, Indiana



W. Lafayette, Indiana

### Campus Locations:

Indiana University  
Iowa State University  
Kansas State University  
Midland University  
Missouri S&T  
Ohio State University  
Purdue University  
Texas A&M  
University of Illinois  
University of Kansas  
University of Missouri  
University of Nebraska



Rolla, Missouri



Ames, Iowa



Manhattan, Kansas

**Beta Sigma Psi National Lutheran Fraternity**

2408 Lebanon Ave., Belleville, IL 62221

Office: 618.235.0014      [office@betasigmaPsi.org](mailto:office@betasigmaPsi.org)

[www.BetaSigmaPsi.org](http://www.BetaSigmaPsi.org)